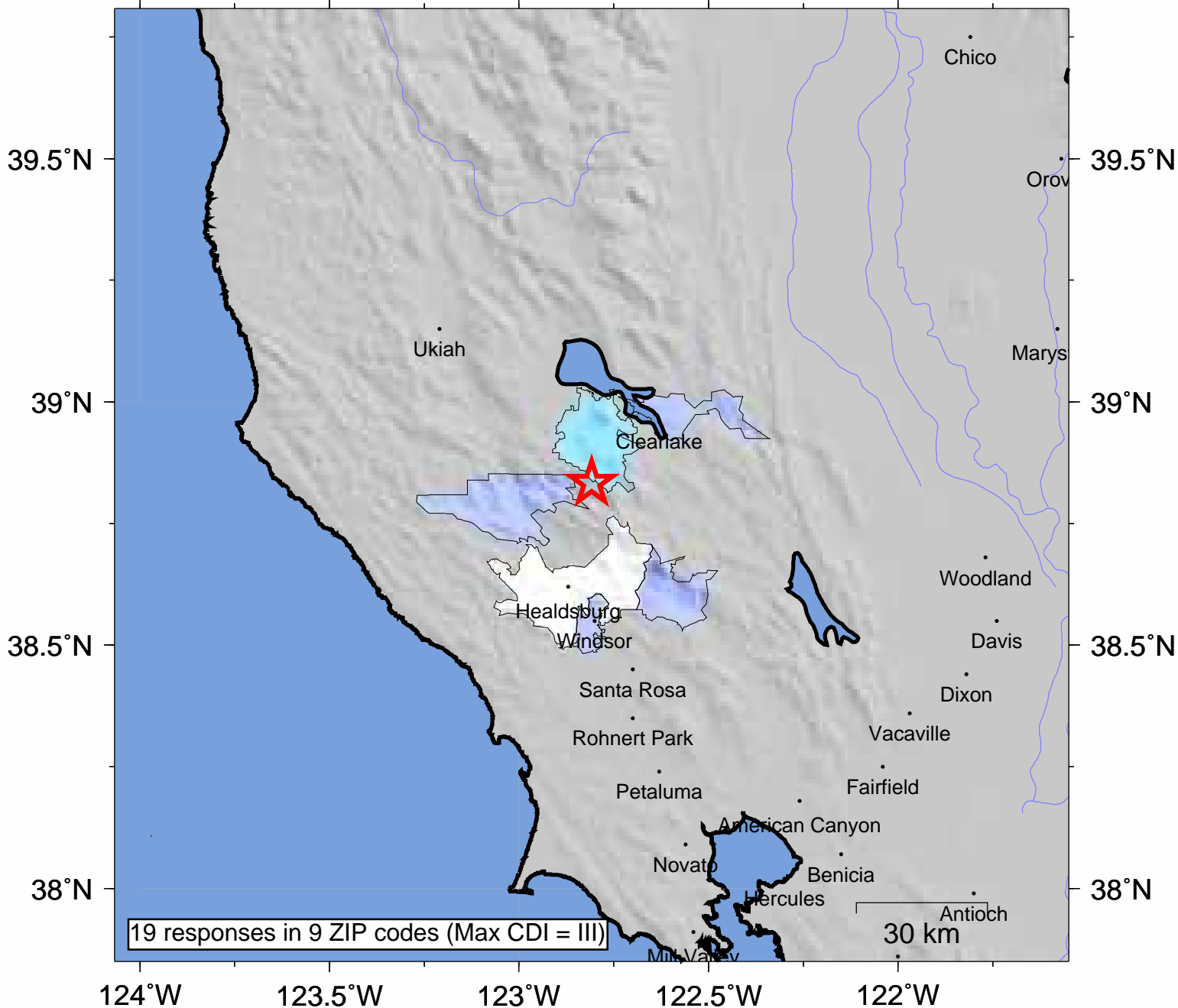


# USGS Community Internet Intensity Map NORTHERN CALIFORNIA

Jul 6 2009 17:29:33 local 38.8328N 122.8085W M3.8 Depth: 3 km ID:nc71244696



INTENSITY	I	II-III	IV	V	VI	VII	VIII	IX	X+
SHAKING	Not felt	Weak	Light	Moderate	Strong	Very strong	Severe	Violent	Extreme
DAMAGE	none	none	none	Very light	Light	Moderate	Moderate/Heavy	Heavy	V. Heavy

Processed: Tue Jul 7 18:41:08 2009