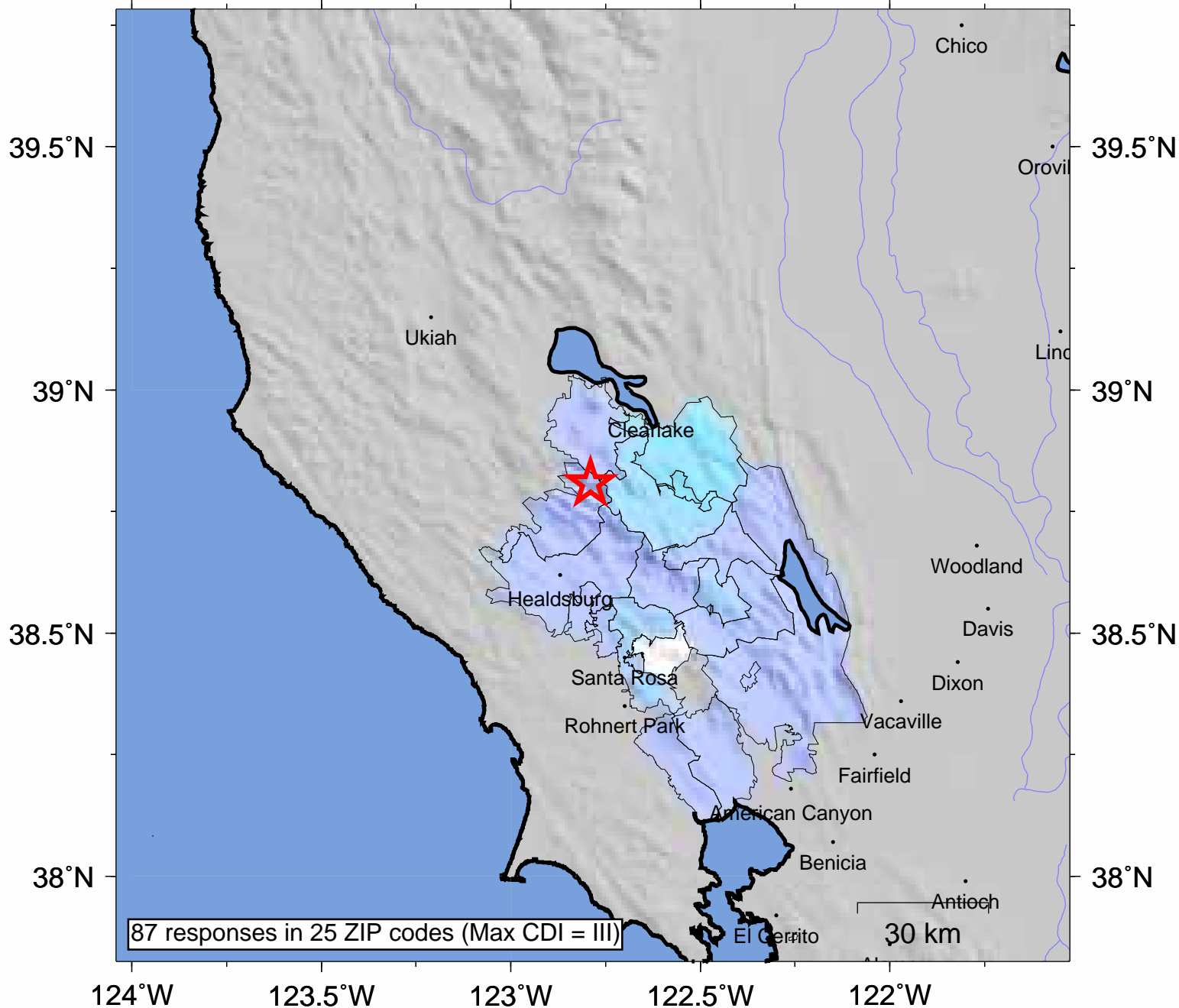


USGS Community Internet Intensity Map NORTHERN CALIFORNIA

Jun 30 2009 10:27:27 local 38.8077N 122.7895W M3.8 Depth: 4 km ID:nc71241391



INTENSITY	I	II-III	IV	V	VI	VII	VIII	IX	X+
SHAKING	Not felt	Weak	Light	Moderate	Strong	Very strong	Severe	Violent	Extreme
DAMAGE	none	none	none	Very light	Light	Moderate	Moderate/Heavy	Heavy	V. Heavy

Processed: Tue Jul 7 18:27:18 2009