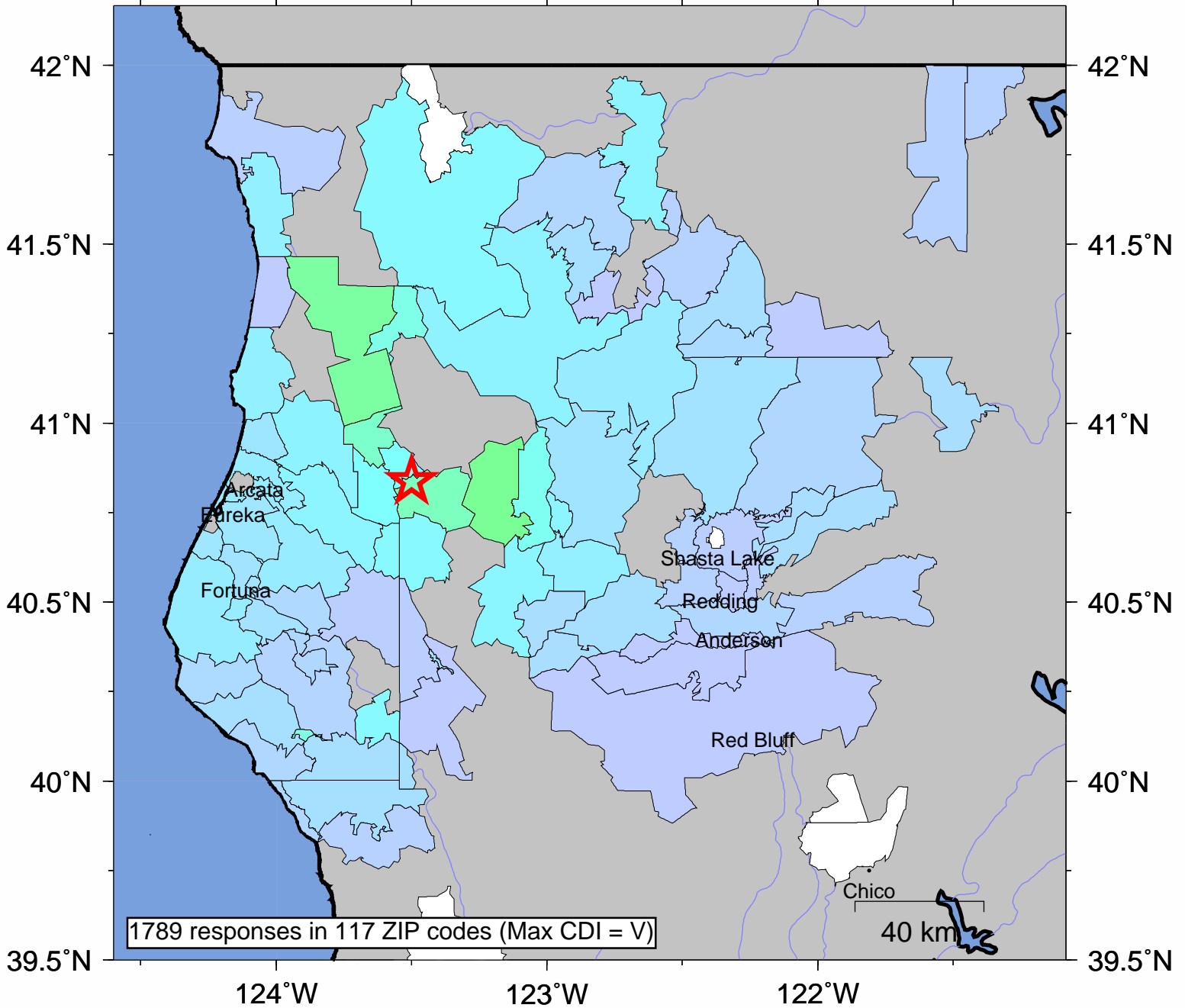


# USGS Community Internet Intensity Map NORTHERN CALIFORNIA

Apr 29 2008 20:03:07 PDT 40.8368N 123.4995W M5.4 Depth: 29 km ID:nc40216664



INTENSITY	I	II-III	IV	V	VI	VII	VIII	IX	X+
SHAKING	Not felt	Weak	Light	Moderate	Strong	Very strong	Severe	Violent	Extreme
DAMAGE	none	none	none	Very light	Light	Moderate	Moderate/Heavy	Heavy	V. Heavy

Processed: Mon Dec 22 18:35:49 2008