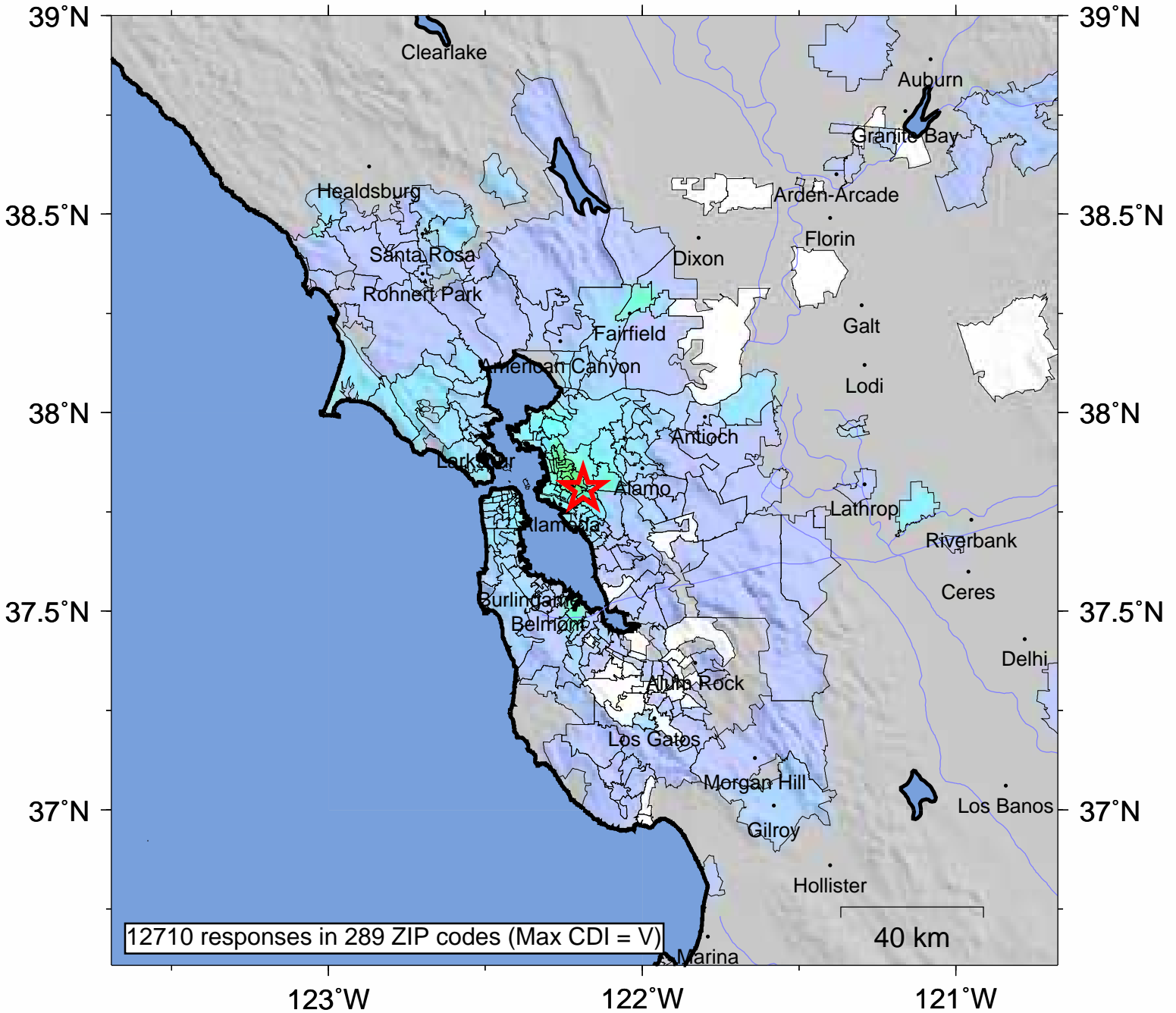


USGS Community Internet Intensity Map SAN FRANCISCO BAY AREA, CALIFORNIA

Jul 20 2007 04:42:22 PDT 37.8075N 122.188W M4.2 Depth: 5 km ID:nc40199209



12710 responses in 289 ZIP codes (Max CDI = V)

INTENSITY	I	II-III	IV	V	VI	VII	VIII	IX	X+
SHAKING	Not felt	Weak	Light	Moderate	Strong	Very strong	Severe	Violent	Extreme
DAMAGE	none	none	none	Very light	Light	Moderate	Moderate/Heavy	Heavy	V. Heavy

Processed: Thu Jul 16 01:55:00 2009