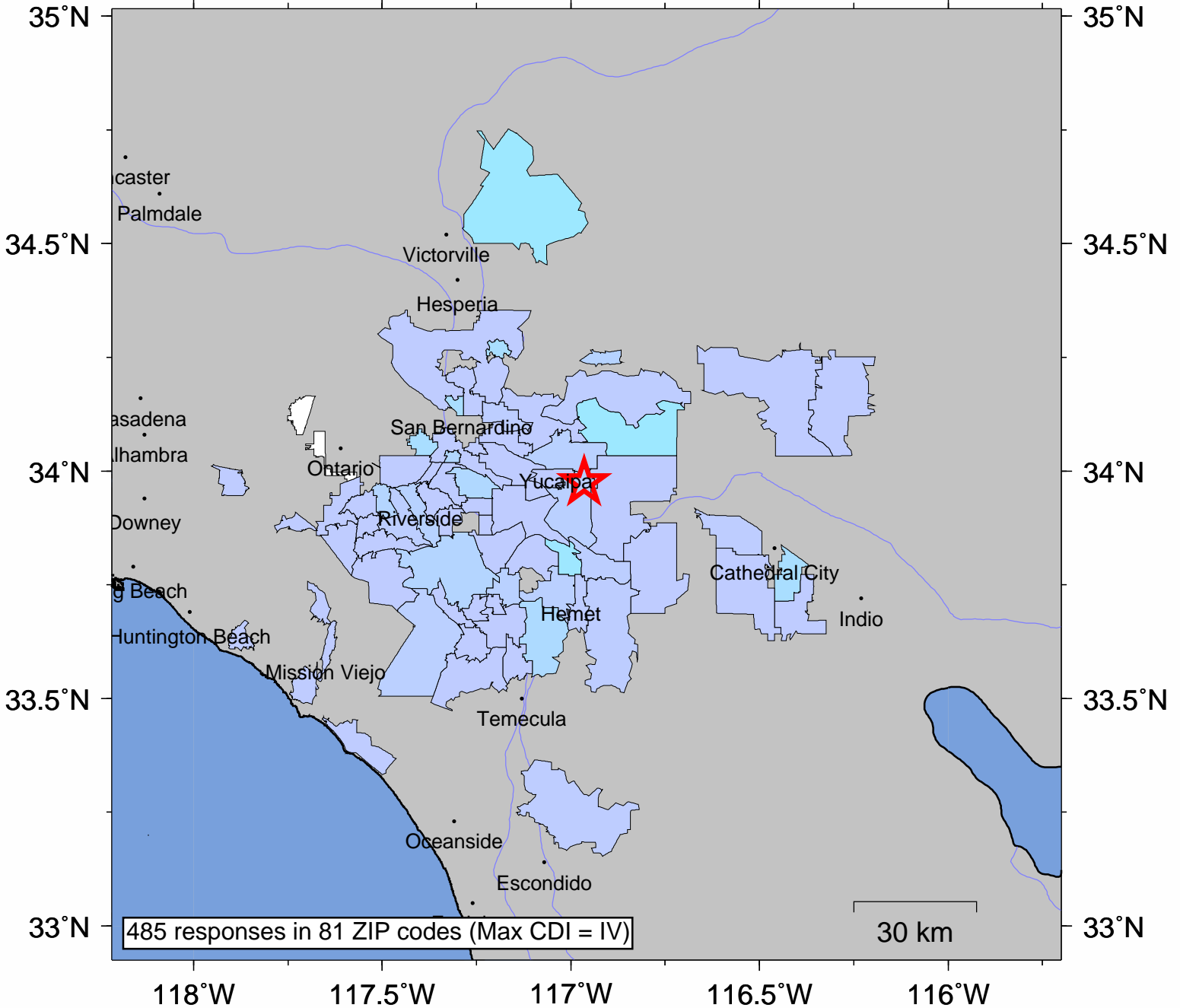


USGS Community Internet Intensity Map SOUTHERN CALIFORNIA

Oct 16 2009 03:03:39 local 33.9754N 116.9643W M3.4 Depth: 14 km ID:ci10481781



INTENSITY	I	II-III	IV	V	VI	VII	VIII	IX	X+
SHAKING	Not felt	Weak	Light	Moderate	Strong	Very strong	Severe	Violent	Extreme
DAMAGE	none	none	none	Very light	Light	Moderate	Moderate/Heavy	Heavy	V. Heavy

Processed: Sat May 12 01:03:10 2012