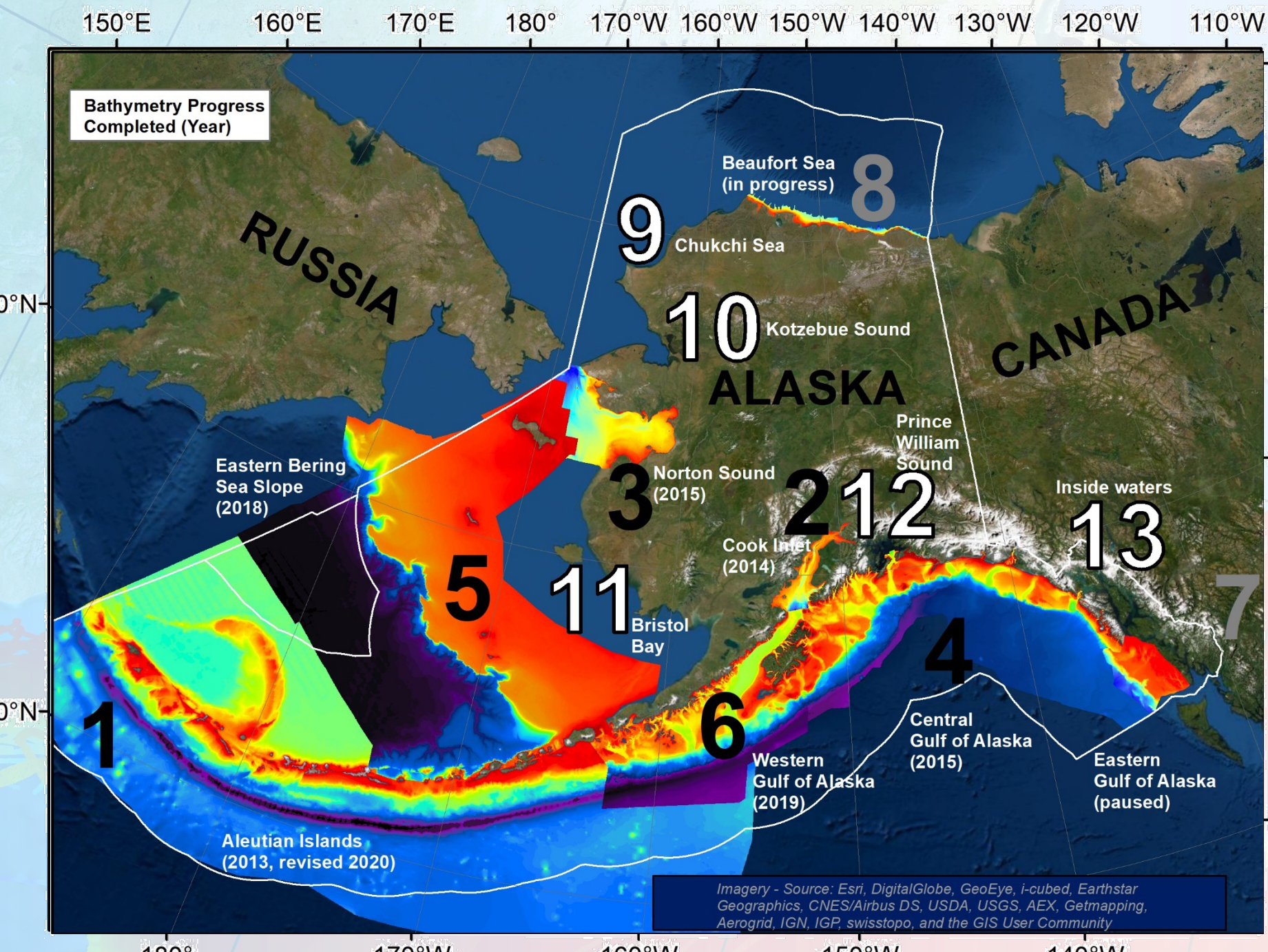


Aleutian Subduction Zone Bathymetry: First Look at New Data

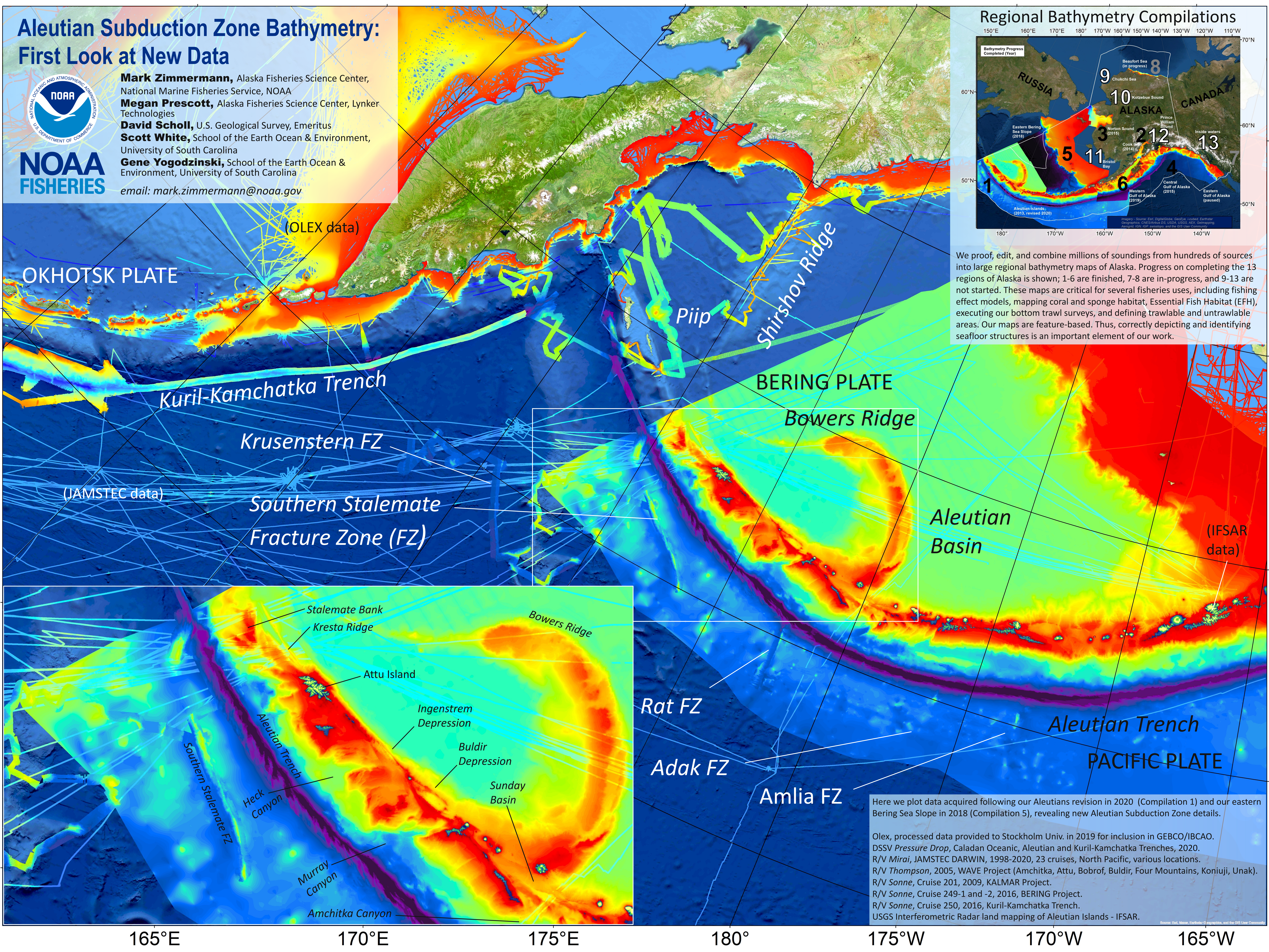


Mark Zimmermann, Alaska Fisheries Science Center, National Marine Fisheries Service, NOAA
Megan Prescott, Alaska Fisheries Science Center, Lynker Technologies
David Scholl, U.S. Geological Survey, Emeritus
Scott White, School of the Earth Ocean & Environment, University of South Carolina
Gene Yogodzinski, School of the Earth Ocean & Environment, University of South Carolina
 email: mark.zimmermann@noaa.gov

Regional Bathymetry Compilations



We proof, edit, and combine millions of soundings from hundreds of sources into large regional bathymetry maps of Alaska. Progress on completing the 13 regions of Alaska is shown; 1-6 are finished, 7-8 are in-progress, and 9-13 are not started. These maps are critical for several fisheries uses, including fishing effect models, mapping coral and sponge habitat, Essential Fish Habitat (EFH), executing our bottom trawl surveys, and defining trawlable and untrawlable areas. Our maps are feature-based. Thus, correctly depicting and identifying seafloor structures is an important element of our work.



Here we plot data acquired following our Aleutians revision in 2020 (Compilation 1) and our eastern Bering Sea Slope in 2018 (Compilation 5), revealing new Aleutian Subduction Zone details.

Olex, processed data provided to Stockholm Univ. in 2019 for inclusion in GEBCO/IBCAO.
 DSSV *Pressure Drop*, Caladan Oceanic, Aleutian and Kuril-Kamchatka Trenches, 2020.
 R/V *Mirai*, JAMSTEC DARWIN, 1998-2020, 23 cruises, North Pacific, various locations.
 R/V *Thompson*, 2005, WAVE Project (Amchitka, Attu, Bobrof, Buldir, Four Mountains, Koniuji, Unak).
 R/V *Sonne*, Cruise 201, 2009, KALMAR Project.
 R/V *Sonne*, Cruise 249-1 and -2, 2016, BERING Project.
 R/V *Sonne*, Cruise 250, 2016, Kuril-Kamchatka Trench.
 USGS Interferometric Radar land mapping of Aleutian Islands - IFSAR.