

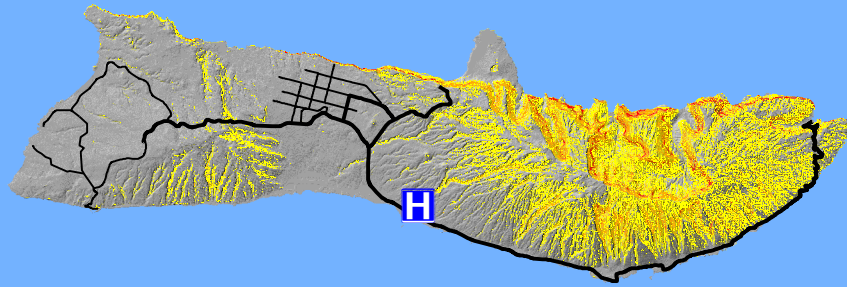
157°W

156°30'W

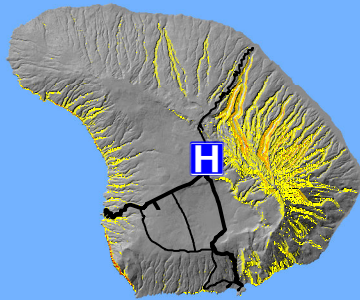
156°W



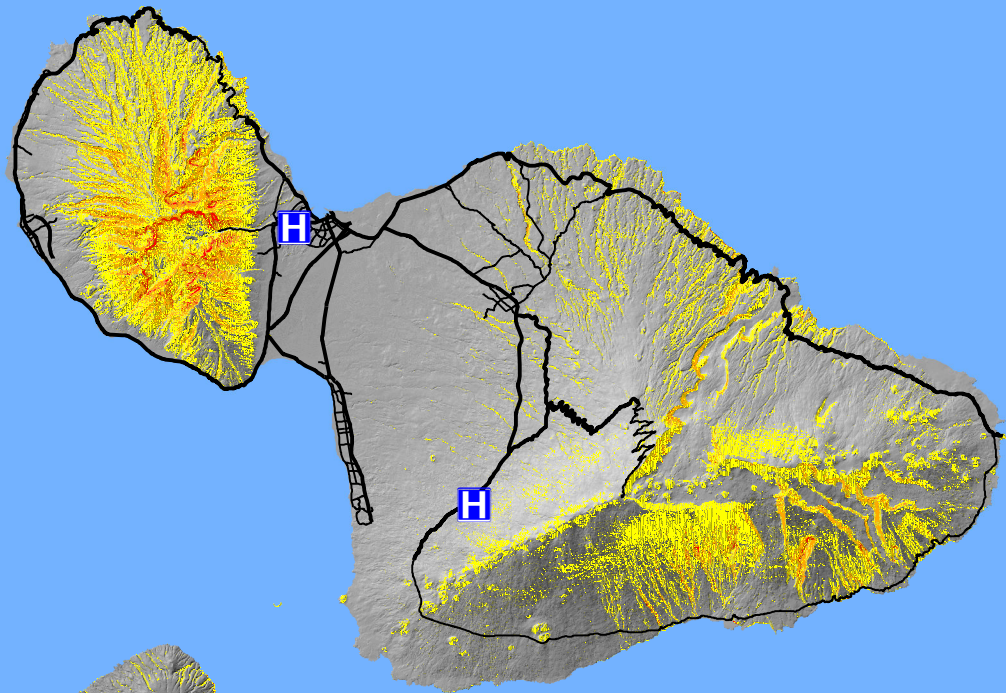
Moloka'i, Lanai, Kaho'olawe, and Maui Landslide Susceptibility



H








H



H

H

Landslide Susceptibility

-  Very High
-  High
-  Moderate
-  Hospitals
-  Roads

This information is preliminary or provisional and is subject to revision. It is being provided to meet the need for timely best science. The information is provided on the condition that neither the USGS nor the U.S. Government shall be held liable for any damages resulting from the authorized or unauthorized use of the information.



157°W

156°30'W

156°W

21°N

21°N

20°30'N

20°30'N