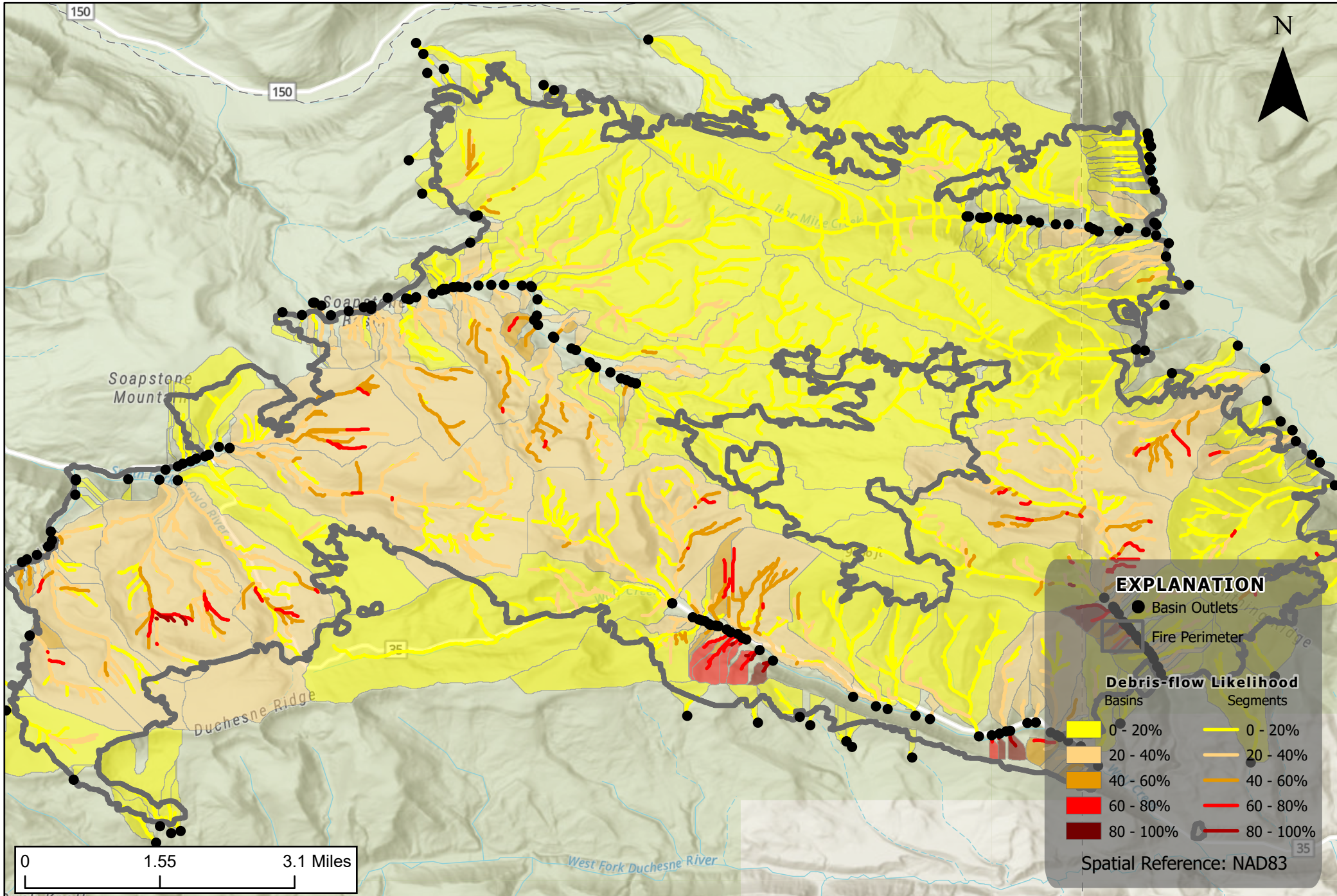


Yellow Lake Fire, Uinta-Wasatch-Cache National Forest, UT

Debris-flow Likelihood

Design storm: Peak 15-minute rainfall intensity at 26mm/hour



0 1.55 3.1 Miles

EXPLANATION

- Basin Outlets
- ▭ Fire Perimeter

Debris-flow Likelihood

Basins	Segments
0 - 20%	0 - 20%
20 - 40%	20 - 40%
40 - 60%	40 - 60%
60 - 80%	60 - 80%
80 - 100%	80 - 100%

Spatial Reference: NAD83