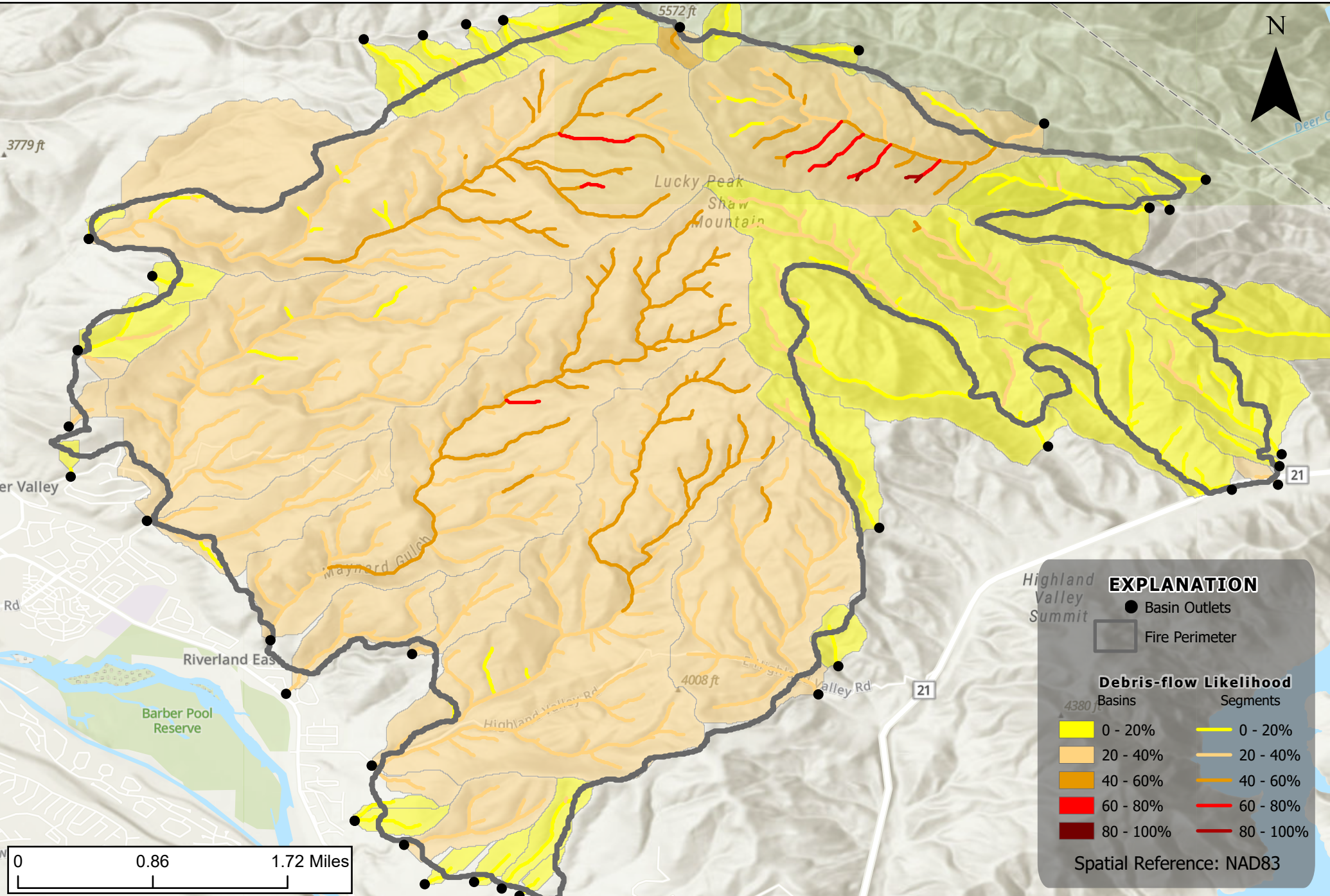


Valley Fire, Ada County, ID

Debris-flow Likelihood

Design storm: Peak 15-minute rainfall intensity at 24mm/hour



EXPLANATION

- Basin Outlets
- ▭ Fire Perimeter

Debris-flow Likelihood

| Basins | Segments |
|-----------|-----------|
| 0 - 20% | 0 - 20% |
| 20 - 40% | 20 - 40% |
| 40 - 60% | 40 - 60% |
| 60 - 80% | 60 - 80% |
| 80 - 100% | 80 - 100% |

Spatial Reference: NAD83