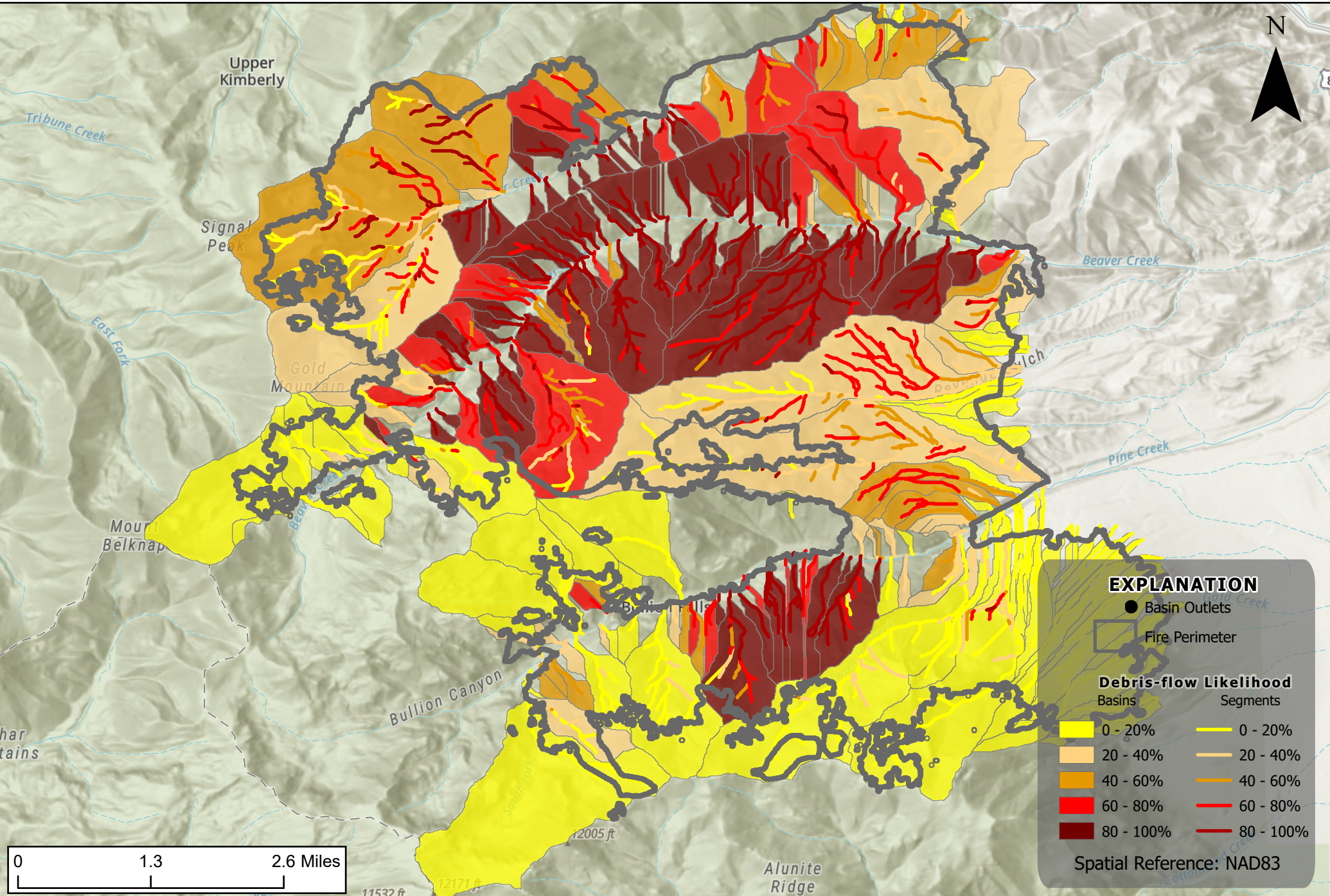


Silver King Fire, Fishlake National Forest, UT

Debris-flow Likelihood

Design storm: Peak 15-minute rainfall intensity at 32mm/hour



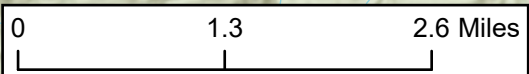
EXPLANATION

- Basin Outlets
- ▭ Fire Perimeter

Debris-flow Likelihood

Basins	Segments
0 - 20%	0 - 20%
20 - 40%	20 - 40%
40 - 60%	40 - 60%
60 - 80%	60 - 80%
80 - 100%	80 - 100%

Spatial Reference: NAD83



har
tains

Upper
Kimberly

Signal
Peak

Gold
Mountain

Moun
Belknap

Bullion Canyon

Alunite
Ridge

12005 ft

12171 ft

11532 ft

Tribune Creek

East Fork

Beaver Creek

Creek

Beaver Creek

Pine Creek

Beaver Creek

Cottonwood Creek