

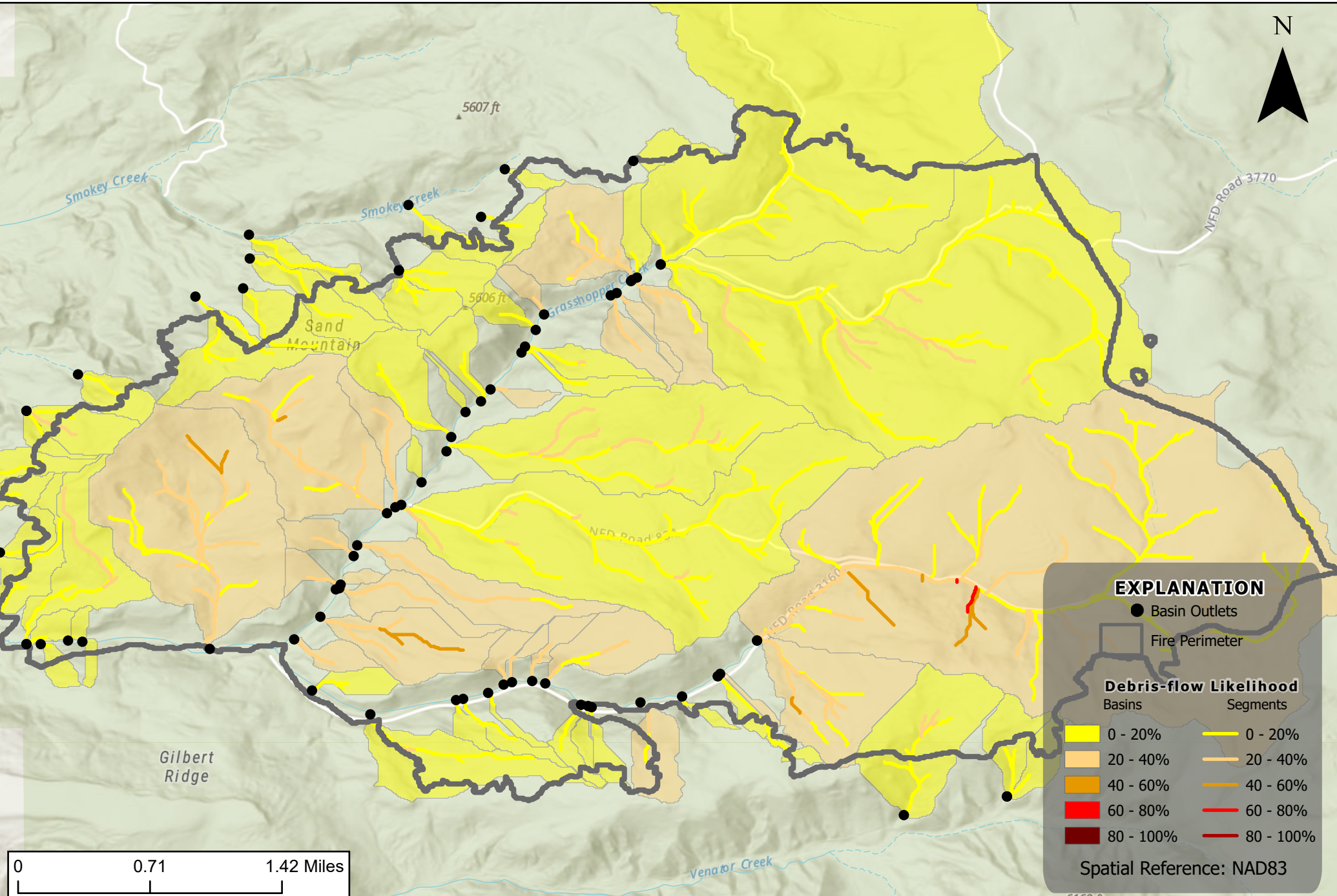
# Sand Fire, Malheur National Forest, OR

Debris-flow Likelihood

Design storm: Peak 15-minute rainfall intensity at 24mm/hour



N



### EXPLANATION

● Basin Outlets

▭ Fire Perimeter

#### Debris-flow Likelihood

Basins

Segments

0 - 20%

0 - 20%

20 - 40%

20 - 40%

40 - 60%

40 - 60%

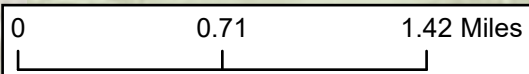
60 - 80%

60 - 80%

80 - 100%

80 - 100%

Spatial Reference: NAD83



6169 ft