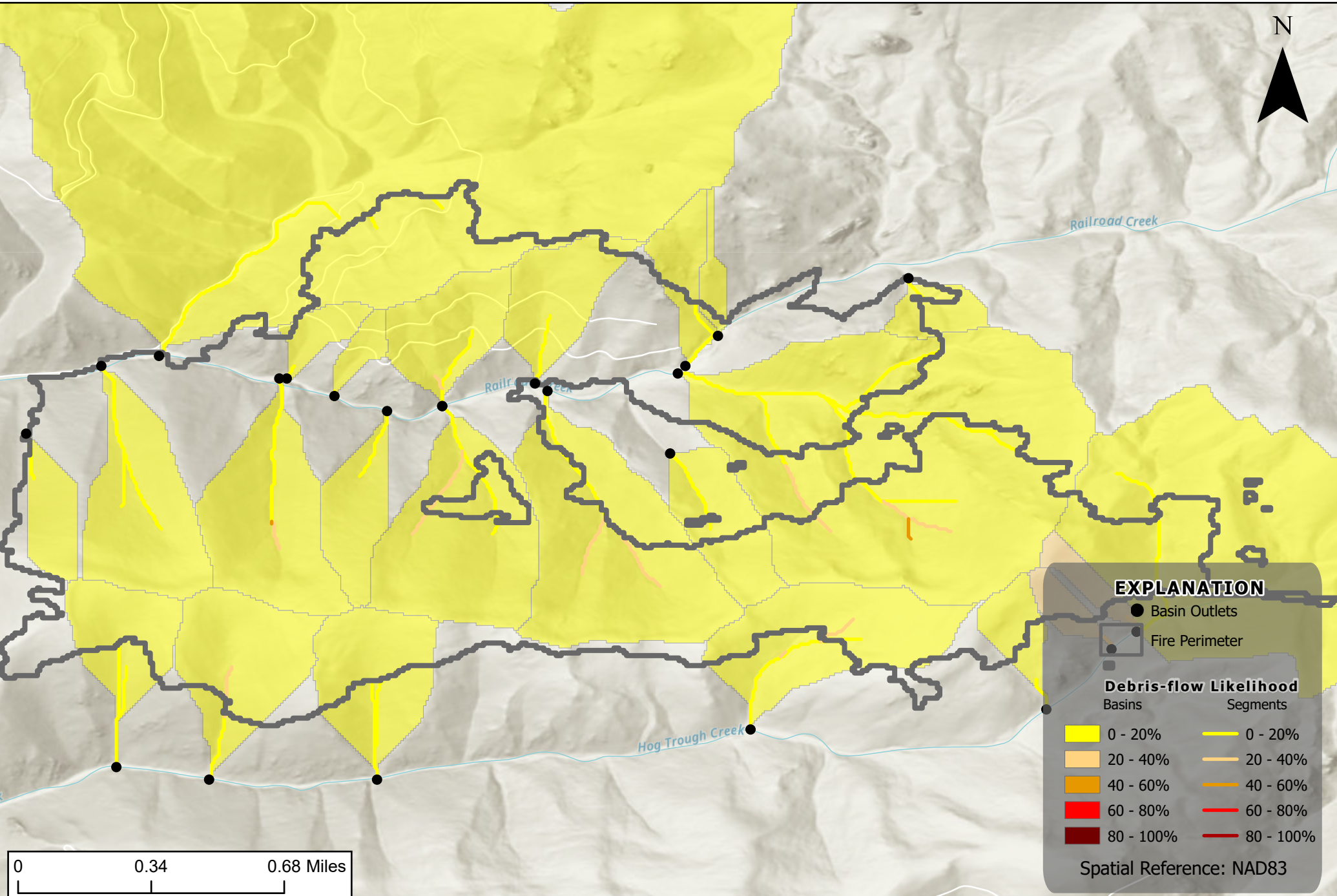


# Railroad Fire, Bitterroot National Forest, MT

Debris-flow Likelihood

Design storm: Peak 15-minute rainfall intensity at 24mm/hour



**EXPLANATION**

- Basin Outlets
- Fire Perimeter

Debris-flow Likelihood	
Basins	Segments
0 - 20%	0 - 20%
20 - 40%	20 - 40%
40 - 60%	40 - 60%
60 - 80%	60 - 80%
80 - 100%	80 - 100%

Spatial Reference: NAD83

