

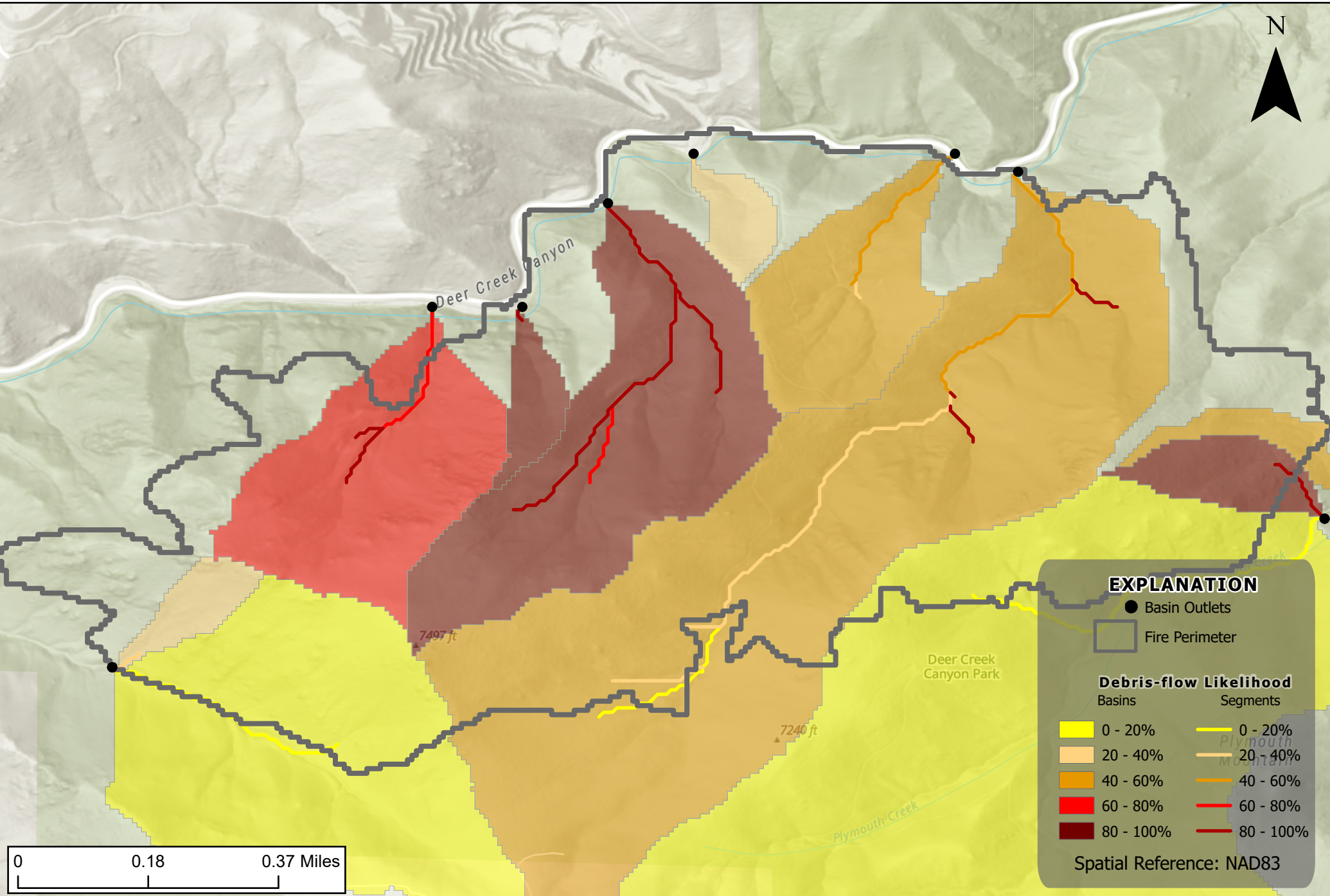
# Quarry Fire, Jefferson County, Colorado, CO

Debris-flow Likelihood

Design storm: Peak 15-minute rainfall intensity at 36mm/hour



N



### EXPLANATION

● Basin Outlets

□ Fire Perimeter

### Debris-flow Likelihood

Basins                      Segments

	0 - 20%		0 - 20%
	20 - 40%		20 - 40%
	40 - 60%		40 - 60%
	60 - 80%		60 - 80%
	80 - 100%		80 - 100%

Spatial Reference: NAD83

