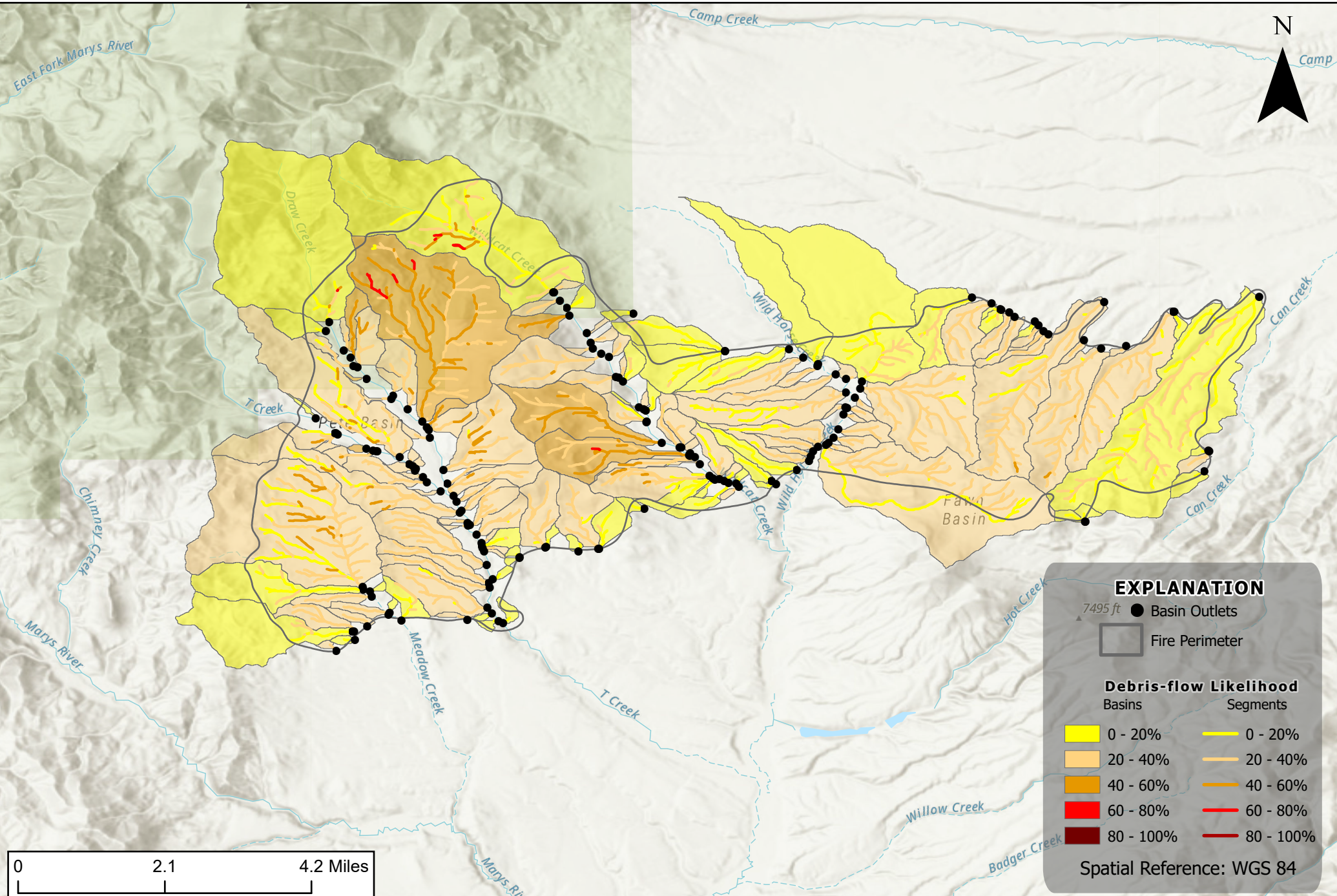


# Wildcat Fire, Humboldt-Toiyabe National Forest, Nevada

Debris-flow Likelihood

Design storm: Peak 15-minute rainfall intensity at 24mm/hour



### EXPLANATION

- 7495 ft ▲ Basin Outlets
- Basin Outlets
- ▭ Fire Perimeter

### Debris-flow Likelihood

Basins	Segments
0 - 20%	0 - 20%
20 - 40%	20 - 40%
40 - 60%	40 - 60%
60 - 80%	60 - 80%
80 - 100%	80 - 100%

Spatial Reference: WGS 84