

# 2021 Black Butte Fire

## Segment Probability Estimates

0 - 20%

20 - 40%

40 - 60%

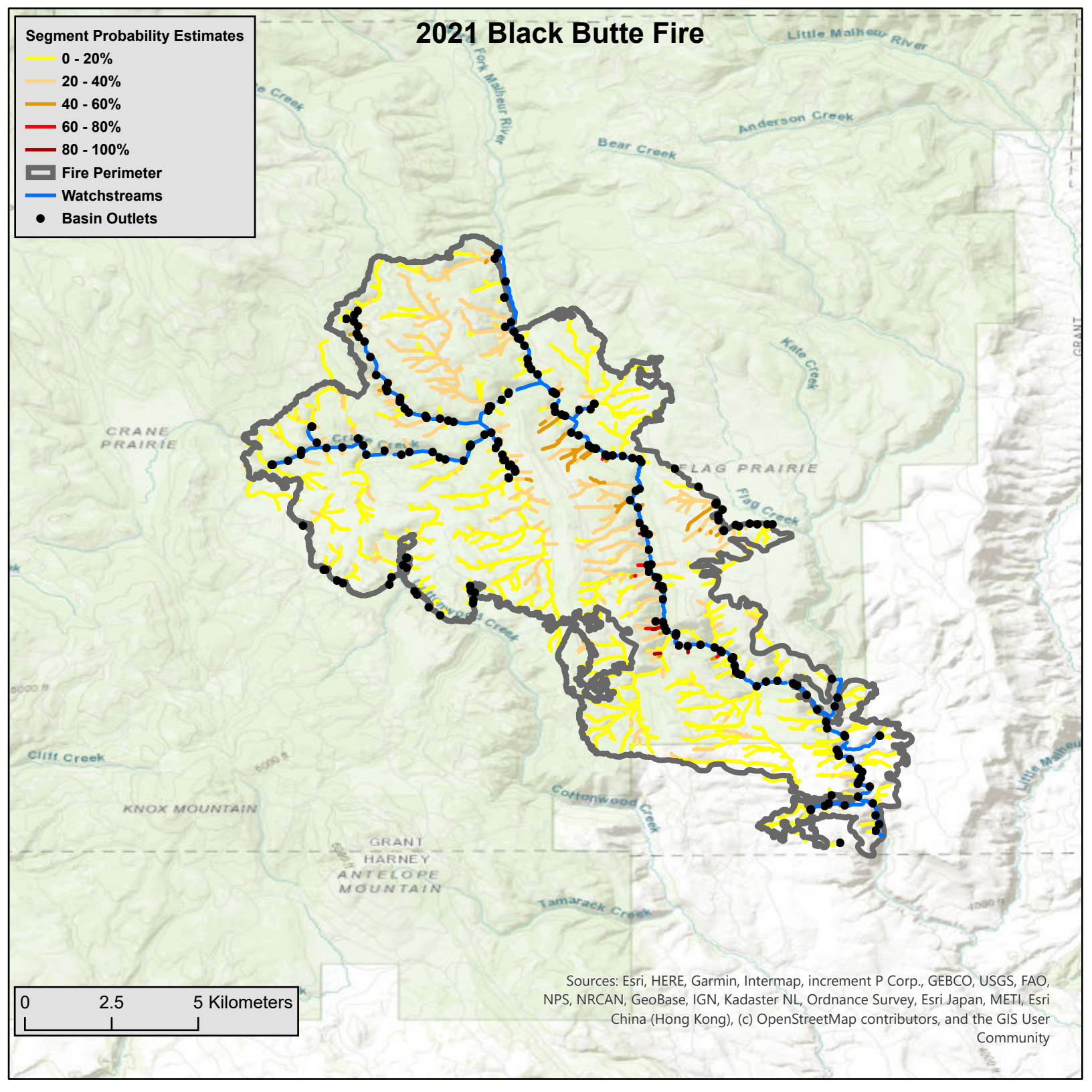
60 - 80%

80 - 100%

Fire Perimeter

Watchstreams

Basin Outlets



0 2.5 5 Kilometers

Sources: Esri, HERE, Garmin, Intermap, increment P Corp., GEBCO, USGS, FAO, NPS, NRCAN, GeoBase, IGN, Kadaster NL, Ordnance Survey, Esri Japan, METI, Esri China (Hong Kong), (c) OpenStreetMap contributors, and the GIS User Community