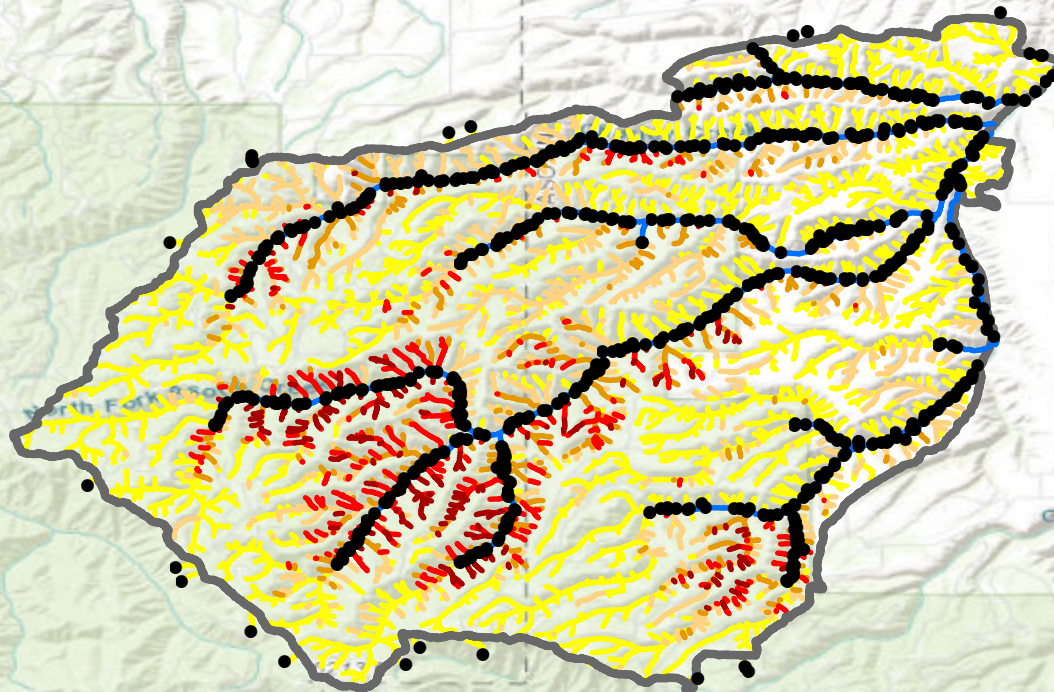


2021 Lick Creek Fire

Segment Probability Estimates

- 0 - 20%
- 20 - 40%
- 40 - 60%
- 60 - 80%
- 80 - 100%
- Fire Perimeter
- Watchstreams
- Basin Outlets



0 4.3 8.6 Kilometers

Sources: Esri, HERE, Garmin, Intermap, increment P Corp., GEBCO, USGS, FAO, NPS, NRCAN, GeoBase, IGN, Kadaster NL, Ordnance Survey, Esri Japan, METI, Esri China (Hong Kong), (c) OpenStreetMap contributors, and the GIS User Community

OREGON