

# 2016 Gap Fire

SISKIYOU MOUNTAINS

7103 ft

## Explanation

● Basin Outlet

▭ Fire Perimeter

— Watchstream

### Segment Probability Estimates

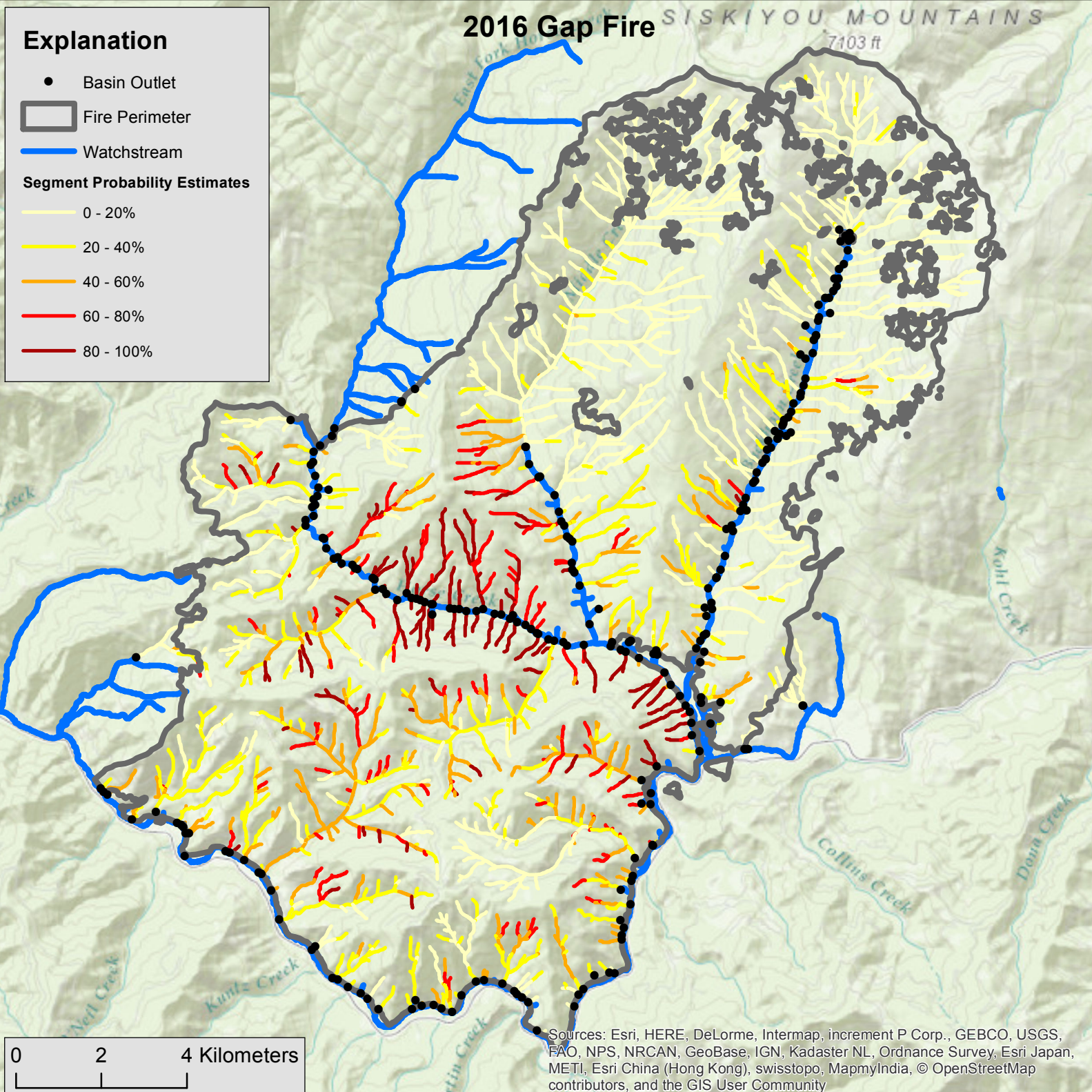
— 0 - 20%

— 20 - 40%

— 40 - 60%

— 60 - 80%

— 80 - 100%



Sources: Esri, HERE, DeLorme, Intermap, increment P Corp., GEBCO, USGS, FAO, NPS, NRCAN, GeoBase, IGN, Kadaster NL, Ordnance Survey, Esri Japan, METI, Esri China (Hong Kong), swisstopo, MapmyIndia, © OpenStreetMap contributors, and the GIS User Community