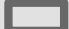


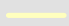
# 2014 Signal Fire

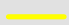
## Legend

 Fire Perimeter

 Watchstream

### Segment Probability Estimates

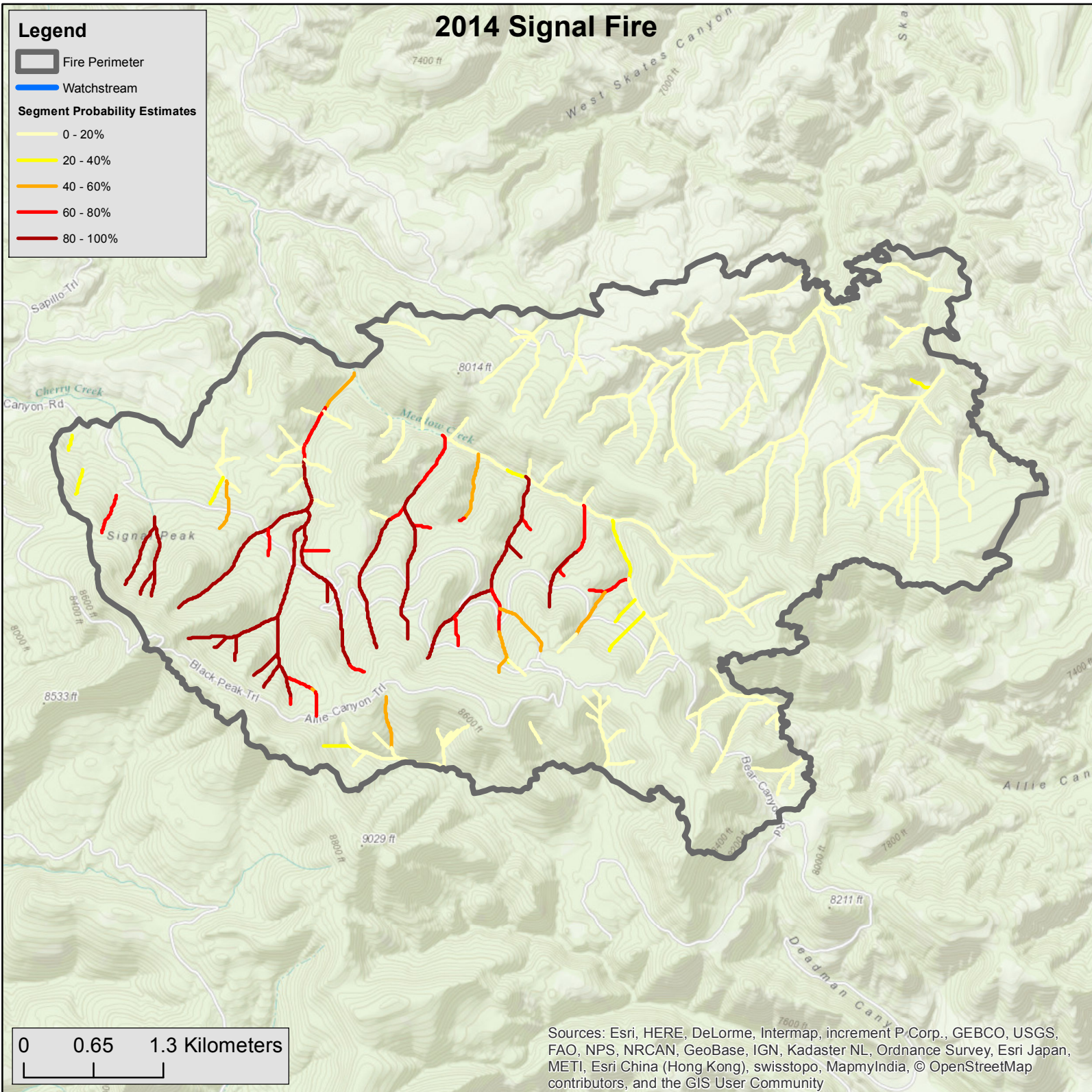
 0 - 20%

 20 - 40%

 40 - 60%

 60 - 80%

 80 - 100%



0 0.65 1.3 Kilometers

Sources: Esri, HERE, DeLorme, Intermap, increment P.Corp., GEBCO, USGS, FAO, NPS, NRCAN, GeoBase, IGN, Kadaster NL, Ordnance Survey, Esri Japan, METI, Esri China (Hong Kong), swisstopo, MapmyIndia, © OpenStreetMap contributors, and the GIS User Community