

2013 Rim Fire

Legend

Fire Perimeter

Watchstream

Segment Probability Estimates

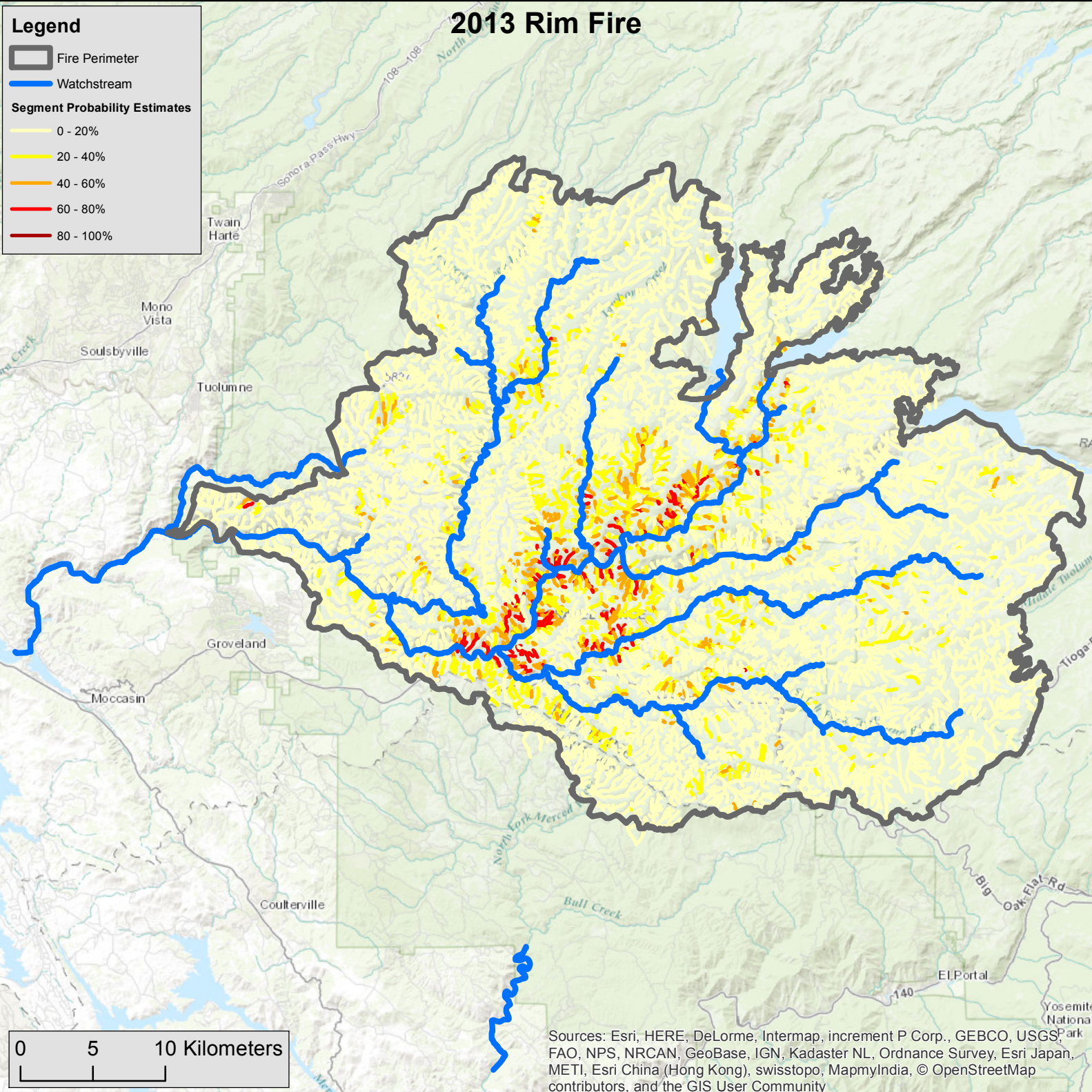
0 - 20%

20 - 40%

40 - 60%

60 - 80%

80 - 100%



0 5 10 Kilometers

Sources: Esri, HERE, DeLorme, Intermap, increment P Corp., GEBCO, USGS, FAO, NPS, NRCAN, GeoBase, IGN, Kadaster NL, Ordnance Survey, Esri Japan, METI, Esri China (Hong Kong), swisstopo, MapmyIndia, © OpenStreetMap contributors, and the GIS User Community