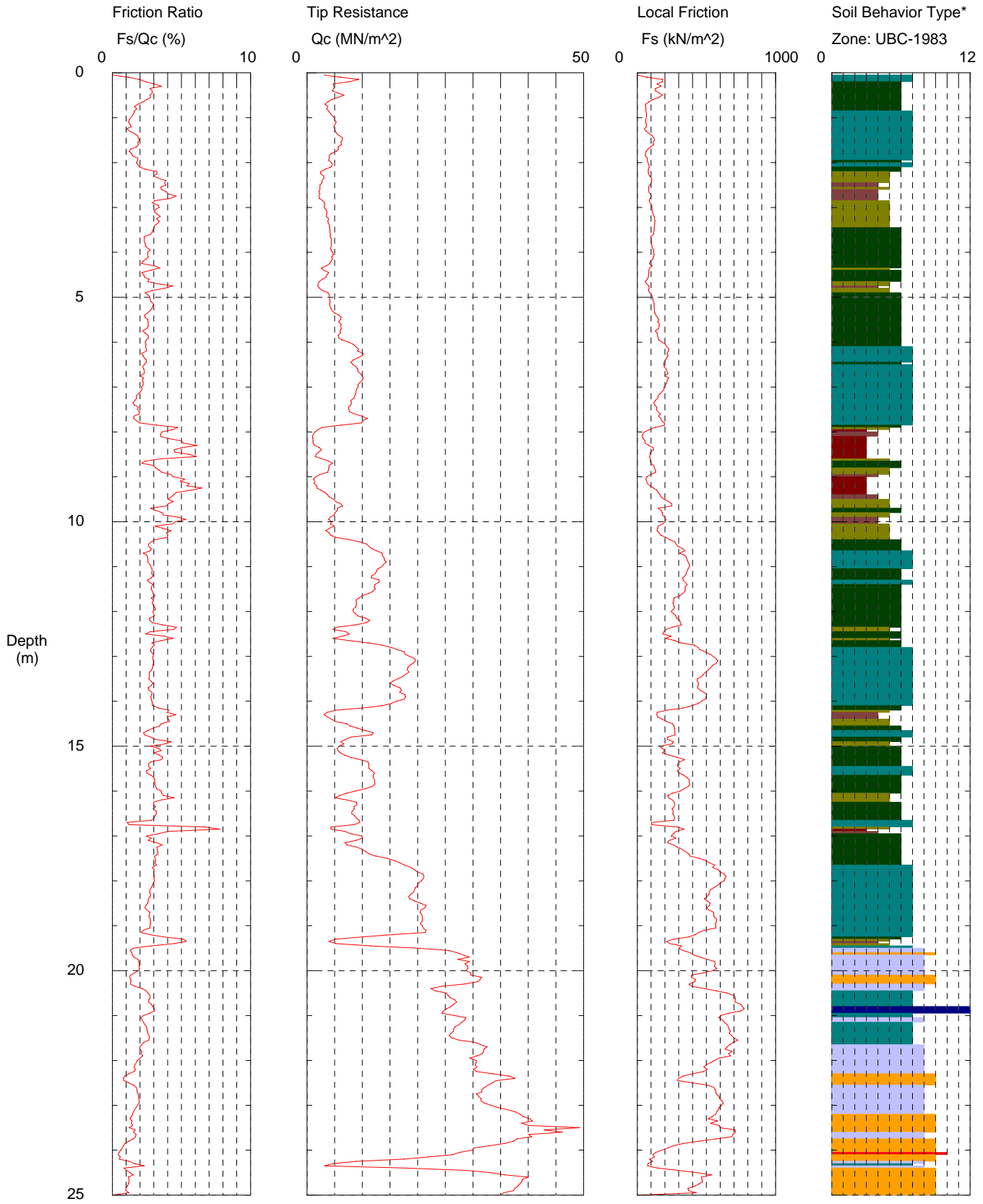


# US Geological Survey

Operator: Tom Noce  
 Sounding: LAC010  
 Cone Used: 766TC

CPT Date/Time: 09-14-02 08:47  
 Location: Cabrillo HS  
 Job Number: LBCH



Maximum Depth = 25.05 meters

Depth Increment = 0.050 meters

- |                          |                             |                            |                                |
|--------------------------|-----------------------------|----------------------------|--------------------------------|
| 1 sensitive fine grained | 4 silty clay to clay        | 7 silty sand to sandy silt | 10 gravelly sand to sand       |
| 2 organic material       | 5 clayey silt to silty clay | 8 sand to silty sand       | 11 very stiff fine grained (*) |
| 3 clay                   | 6 sandy silt to clayey silt | 9 sand                     | 12 sand to clayey sand (*)     |

\*Soil behavior type and SPT based on data from UBC-1983