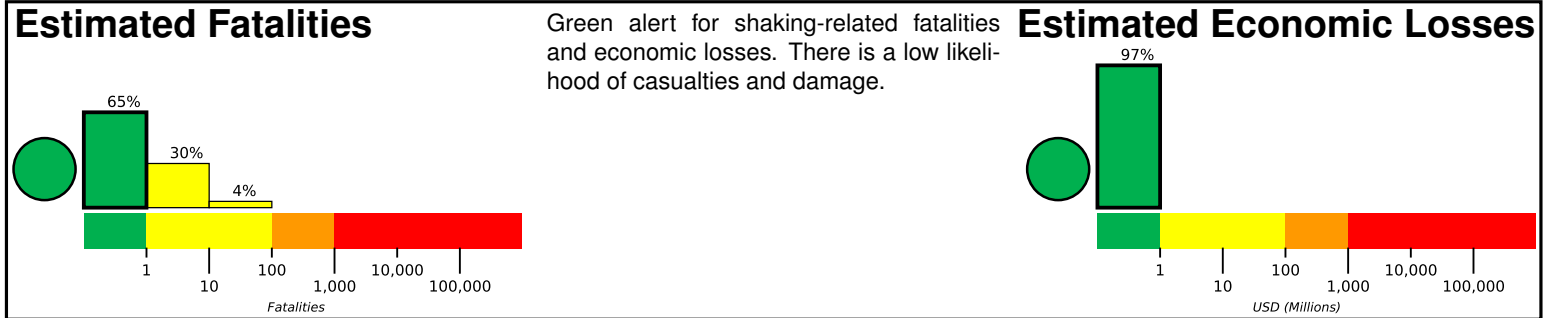


M 6.0, 39km WSW of Pyu, Burma

Origin Time: 2018-01-11 18:26:24 UTC (Fri 00:56:24 local)
Location: 18.3630° N 96.0795° E Depth: 10.0 km

Created: 2 hours, 4 minutes after earthquake

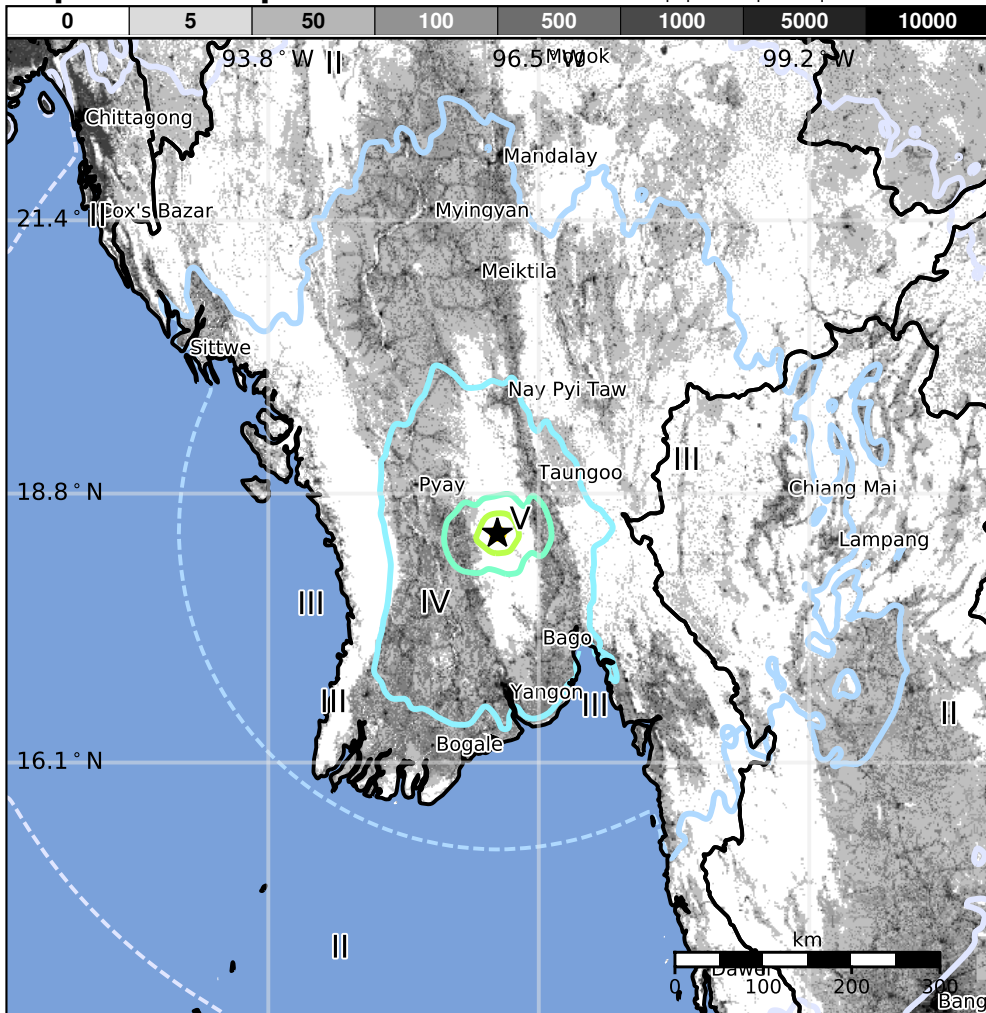


Estimated Population Exposed to Earthquake Shaking

ESTIMATED POPULATION EXPOSURE (k=x1000)	17,385k*	66,978k	17,229k	1,055k	2k	0	0	0	0	
ESTIMATED MODIFIED MERCALLI INTENSITY	I	II-III	IV	V	VI	VII	VIII	IX	X+	
PERCEIVED SHAKING	Not felt	Weak	Light	Moderate	Strong	Very Strong	Severe	Violent	Extreme	
POTENTIAL DAMAGE	Resistant Structures	None	None	None	V. Light	Light	Moderate	Mod./Heavy	Heavy	V. Heavy
	Vulnerable Structures	None	None	None	Light	Moderate	Mod./Heavy	Heavy	V. Heavy	V. Heavy

*Estimated exposure only includes population within the map area.

Population Exposure



Structures

Overall, the population in this region resides in structures that are highly vulnerable to earthquake shaking, though some resistant structures exist. The predominant vulnerable building types are rubble/field stone with mud and unknown/miscellaneous types construction.

Historical Earthquakes

Date (UTC)	Dist. (km)	Mag.	Max MMI(#)	Shaking Deaths
2004-09-17	293	5.7	VI(2k)	-
1995-05-16	70	6.1	IX(2k)	-
2003-09-21	175	6.6	IX(62k)	-

Selected City Exposure

from GeoNames.org

MMI	City	Population
V	Pyu	40k
IV	Paungde	37k
IV	Letpandan	39k
IV	Taungoo	107k
IV	Nyaunglebin	90k
IV	Tharyarwady	54k
IV	Nay Pyi Taw	925k
IV	Yangon	4,478k
III	Mandalay	1,208k
II	Chittagong	3,920k
I	Bangkok	5,104k