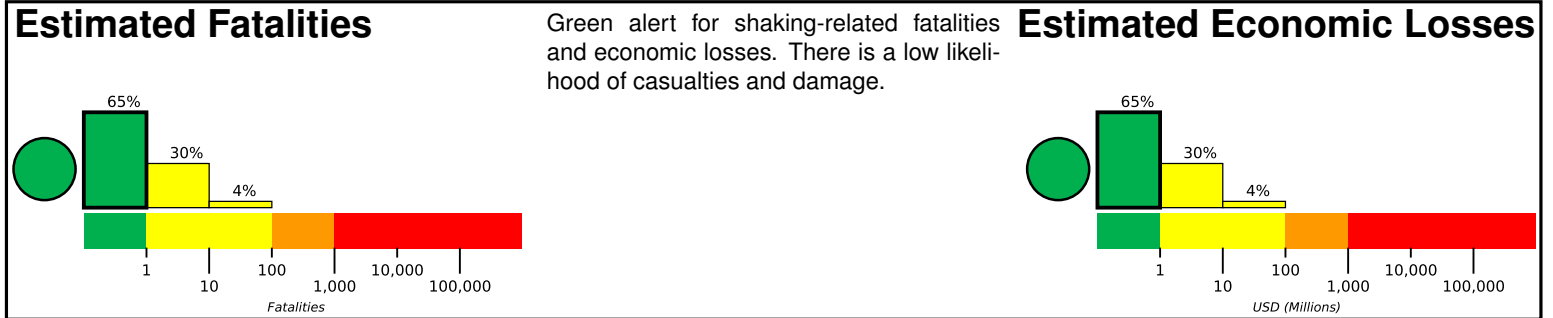


# M 6.2, 36km NW of Ishkashim, Tajikistan

Origin Time: 2018-05-09 10:41:45 UTC (Wed 15:11:45 local)  
Location: 36.9902° N 71.3687° E Depth: 111.9 km

## PAGER Version 2

Created: 2 hours, 6 minutes after earthquake

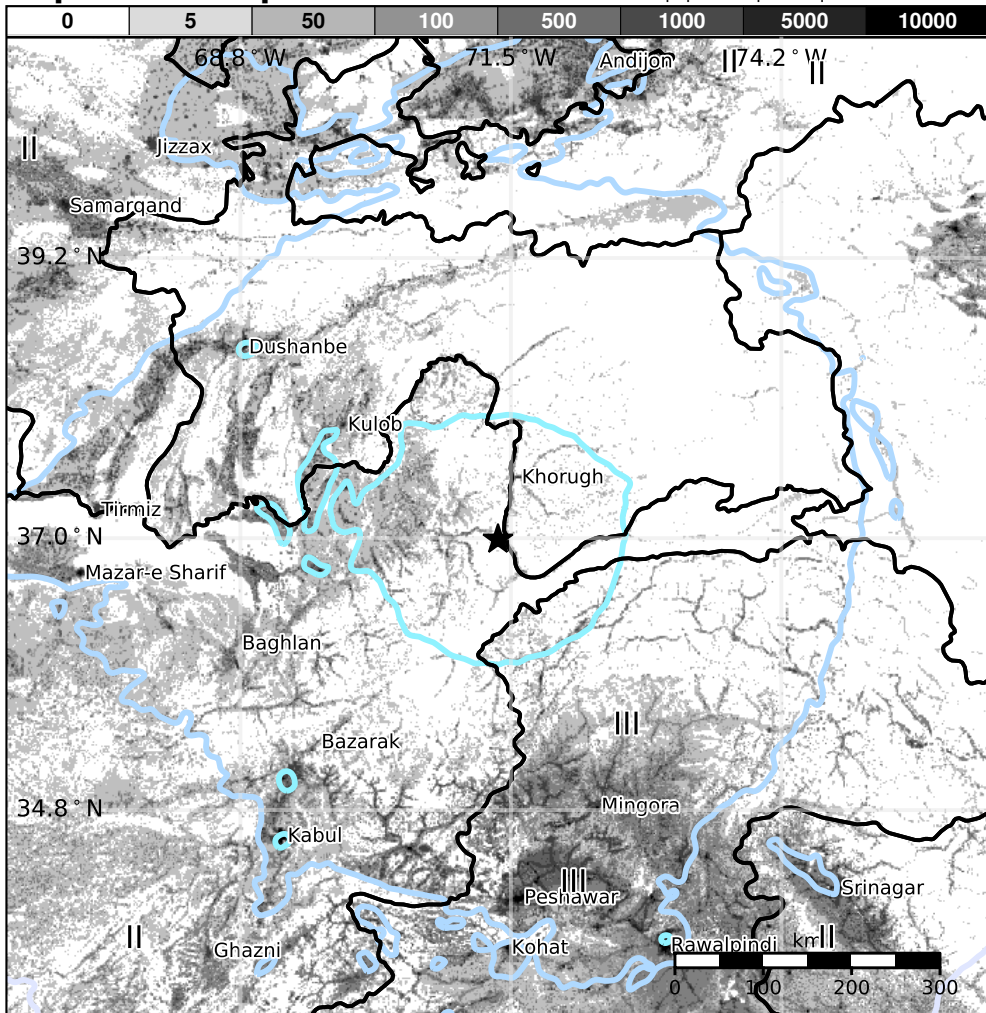


## Estimated Population Exposed to Earthquake Shaking

ESTIMATED POPULATION EXPOSURE (k=x1000)	110k*	94,530k	10,752k	0	0	0	0	0	0	
ESTIMATED MODIFIED MERCALLI INTENSITY	I	II-III	IV	V	VI	VII	VIII	IX	X+	
PERCEIVED SHAKING	Not felt	Weak	Light	Moderate	Strong	Very Strong	Severe	Violent	Extreme	
POTENTIAL DAMAGE	Resistant Structures	None	None	None	V. Light	Light	Moderate	Mod./Heavy	Heavy	V. Heavy
	Vulnerable Structures	None	None	None	Light	Moderate	Mod./Heavy	Heavy	V. Heavy	V. Heavy

\*Estimated exposure only includes population within the map area.

## Population Exposure



## Structures

Overall, the population in this region resides in structures that are vulnerable to earthquake shaking, though resistant structures exist. The predominant vulnerable building types are adobe block and log construction.

## Historical Earthquakes

Date (UTC)	Dist. (km)	Mag.	Max MMI(#)	Shaking Deaths
2001-06-01	278	5.0	V(1,344k)	4
2002-01-09	227	5.2	VI(51k)	3
2005-10-08	344	7.6	IX(337k)	87k

Recent earthquakes in this area have caused secondary hazards such as landslides and liquefaction that might have contributed to losses.

## Selected City Exposure

from GeoNames.org

MMI	City	Population
IV	Jurm	12k
IV	Ishqoshim	26k
IV	Ashkasham	12k
IV	Baharak	<1k
IV	Chakaran	<1k
IV	Hafiz Moghul	<1k
IV	<b>Dushanbe</b>	<b>679k</b>
IV	<b>Kabul</b>	<b>3,044k</b>
III	<b>Peshawar</b>	<b>1,219k</b>
III	Muzaffarabad	725k
III	<b>Srinagar</b>	<b>976k</b>

PAGER content is automatically generated, and only considers losses due to structural damage. Limitations of input data, shaking estimates, and loss models may add uncertainty.

bold cities appear on map.

(k=x1000)