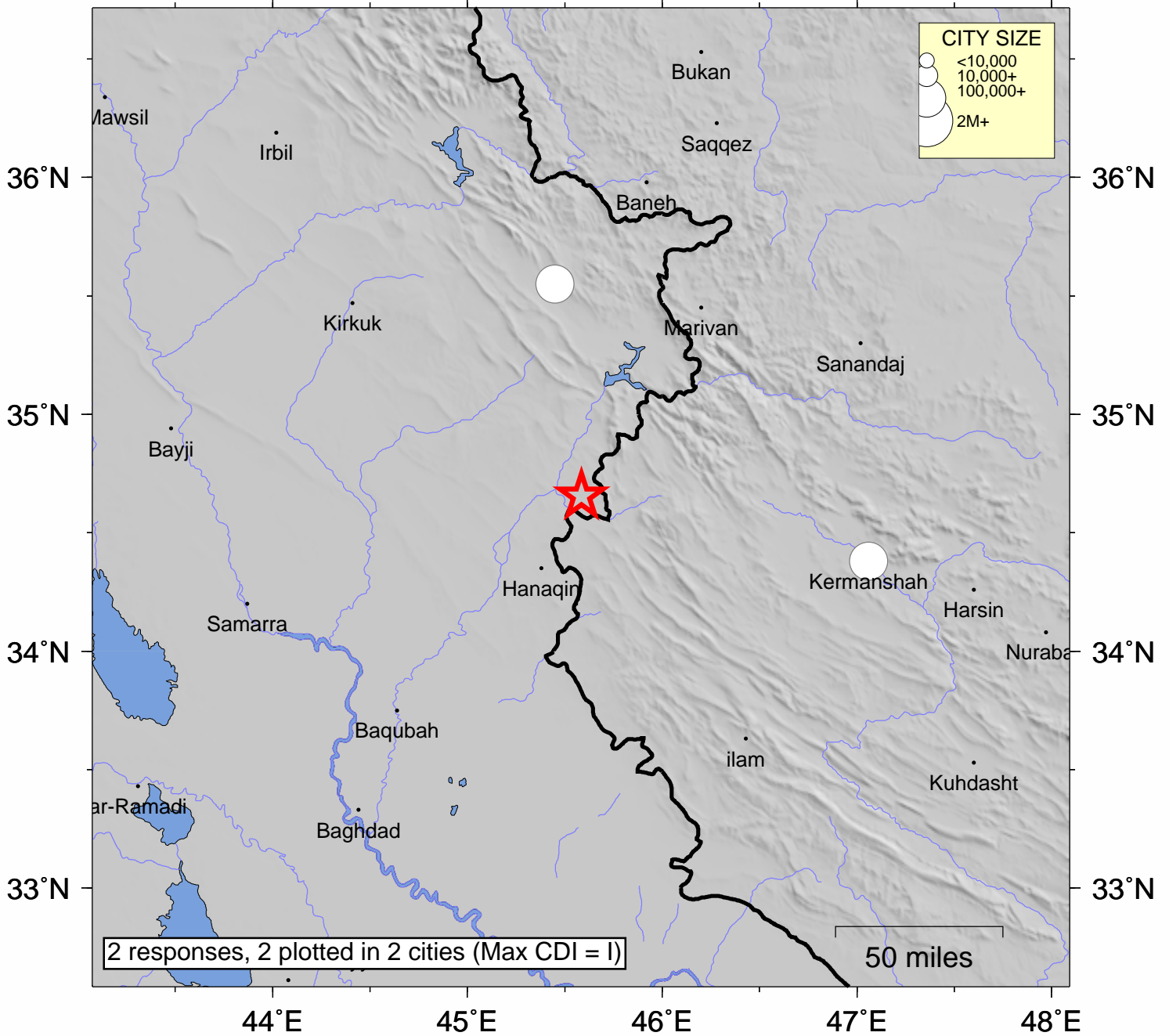


# USGS Community Internet Intensity Map IRAN-IRAQ BORDER REGION

Nov 14 2017 06:16:05 PM local 34.6554N 45.5857E M4.4 Depth: 12 km ID:us2000bnas



<b>SHAKING</b>	<i>Not felt</i>	<i>Weak</i>	<i>Light</i>	<i>Moderate</i>	<i>Strong</i>	Very strong	Severe	Violent	Extreme
<b>DAMAGE</b>	none	none	none	Very light	<i>Light</i>	<i>Moderate</i>	<i>Moderate/Heavy</i>	<i>Heavy</i>	<i>Very Heavy</i>
<b>INTENSITY</b>	<b>I</b>	<b>II-III</b>	<b>IV</b>	<b>V</b>	<b>VI</b>	<b>VII</b>	<b>VIII</b>	<b>IX</b>	<b>X+</b>

Processed: Wed Nov 15 02:14:07 2017 vmdyfi1