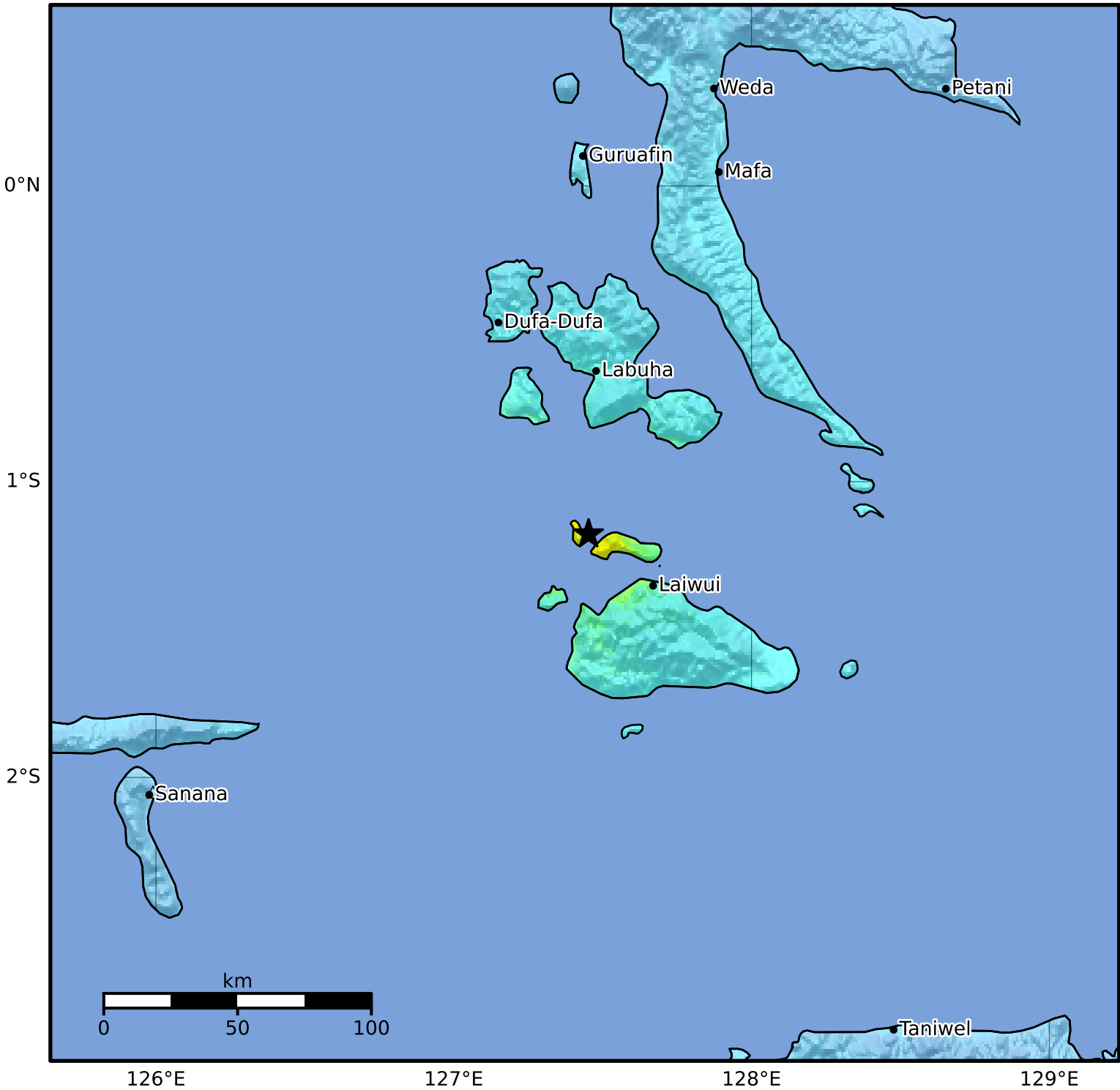


Macroseismic Intensity Map USGS  
 ShakeMap: 61 km S of Labuha, North Maluku, ID  
 Oct 21, 2024 03:24:16 UTC M5.8 S1.18 E127.45 Depth: 16.0km ID:us6000nzyn



| SHAKING   | Not felt | Weak          | Light     | Moderate   | Strong    | Very strong | Severe         | Violent   | Extreme    |
|-----------|----------|---------------|-----------|------------|-----------|-------------|----------------|-----------|------------|
| DAMAGE    | None     | None          | None      | Very light | Light     | Moderate    | Moderate/heavy | Heavy     | Very heavy |
| PGA(%g)   | <0.0464  | 0.297         | 2.76      | 6.2        | 11.5      | 21.5        | 40.1           | 74.7      | >139       |
| PGV(cm/s) | <0.0215  | 0.135         | 1.41      | 4.65       | 9.64      | 20          | 41.4           | 85.8      | >178       |
| INTENSITY | <b>I</b> | <b>II-III</b> | <b>IV</b> | <b>V</b>   | <b>VI</b> | <b>VII</b>  | <b>VIII</b>    | <b>IX</b> | <b>X+</b>  |

Scale based on Worden et al. (2012) Version 7: Processed 2024-12-25T22:57:47Z  
 △ Seismic Instrument ○ Reported Intensity ★ Epicenter