

M 7.8, Central Turkey

Origin Time: 2023-02-06 01:17:34 UTC (Mon 04:17:34 local)
Location: 37.2199° N 37.0189° E Depth: 10.0 km

PAGER Version 15

Created: 4 weeks, 3 days after earthquake

Estimated Fatalities

Estimated economic losses are 1-10% GDP of Turkey.

Estimated Economic Losses

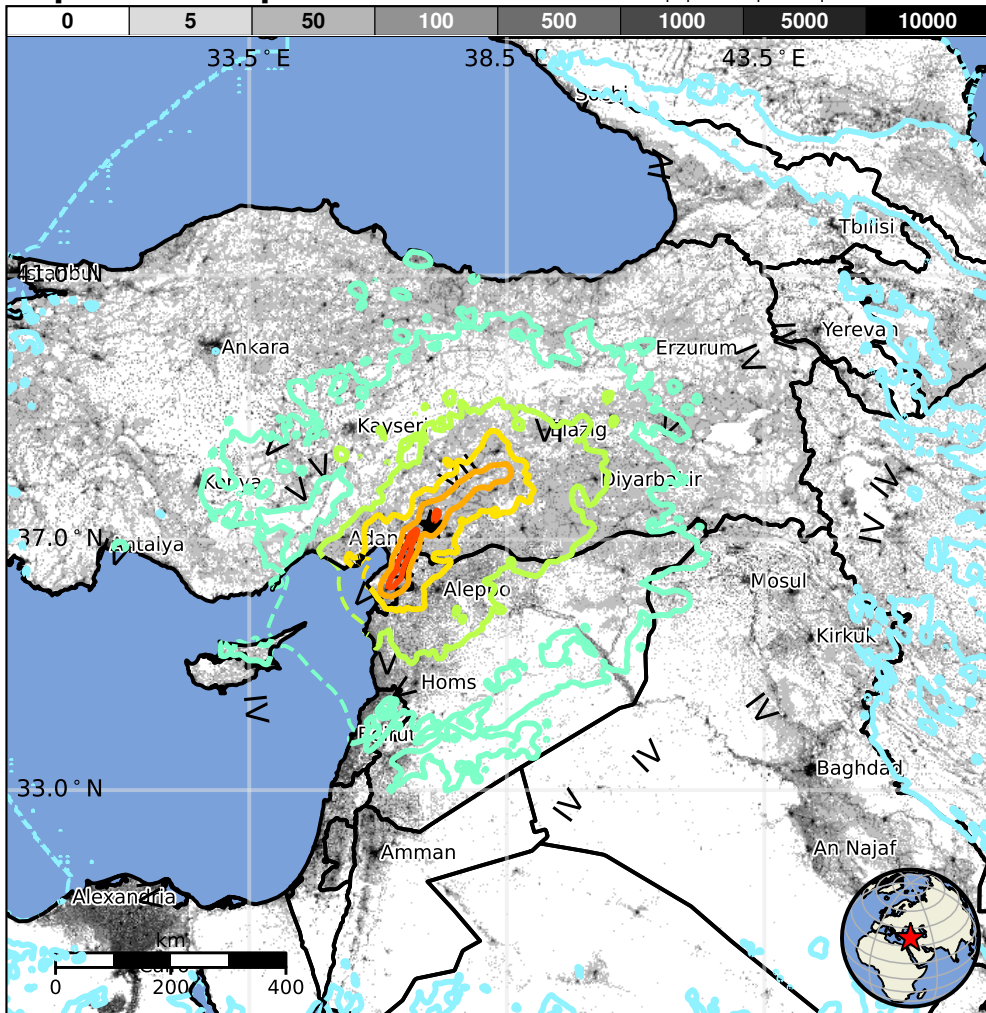
Red alert for shaking-related fatalities and economic losses. High casualties and extensive damage are probable and the disaster is likely widespread. Past red alerts have required a national or international response.

Estimated Population Exposed to Earthquake Shaking

ESTIMATED POPULATION EXPOSURE (k=x1000)		—*	11,123k*	239,033k	22,806k	13,476k	7,058k	1,191k	710k	0
ESTIMATED MODIFIED MERCALLI INTENSITY		I	II-III	IV	V	VI	VII	VIII	IX	X+
PERCEIVED SHAKING		Not felt	Weak	Light	Moderate	Strong	Very Strong	Severe	Violent	Extreme
POTENTIAL DAMAGE	Resistant Structures	None	None	None	V. Light	Light	Moderate	Mod./Heavy	Heavy	V. Heavy
	Vulnerable Structures	None	None	None	Light	Moderate	Mod./Heavy	Heavy	V. Heavy	V. Heavy

*Estimated exposure only includes population within the map area.

Population Exposure



Structures

Overall, the population in this region resides in structures that are extremely vulnerable to earthquake shaking, though some resistant structures exist. The predominant vulnerable building types are unreinforced brick masonry and low-rise nonductile concrete frame with infill construction.

Historical Earthquakes

Date (UTC)	Dist. (km)	Mag.	Max MMI(#)	Shaking Deaths
2001-06-25	71	5.4	V(26k)	0
1992-03-13	358	6.6	IX(151k)	498
1975-09-06	358	6.7	VIII(1k)	2k

Recent earthquakes in this area have caused secondary hazards such as landslides that might have contributed to losses.

Selected City Exposure

from GeoNames.org

MMI	City	Population
IX	Asagi Karafakili	1k
IX	Hassa	10k
IX	Islahiye	<1k
IX	Aktepe	<1k
IX	Narli	<1k
IX	Golbasi	28k
IV	Cairo	7,735k
IV	Baghdad	7,216k
IV	Alexandria	3,812k
IV	Istanbul	11,174k
III	Ankara	3,517k

bold cities appear on map.

(k=x1000)