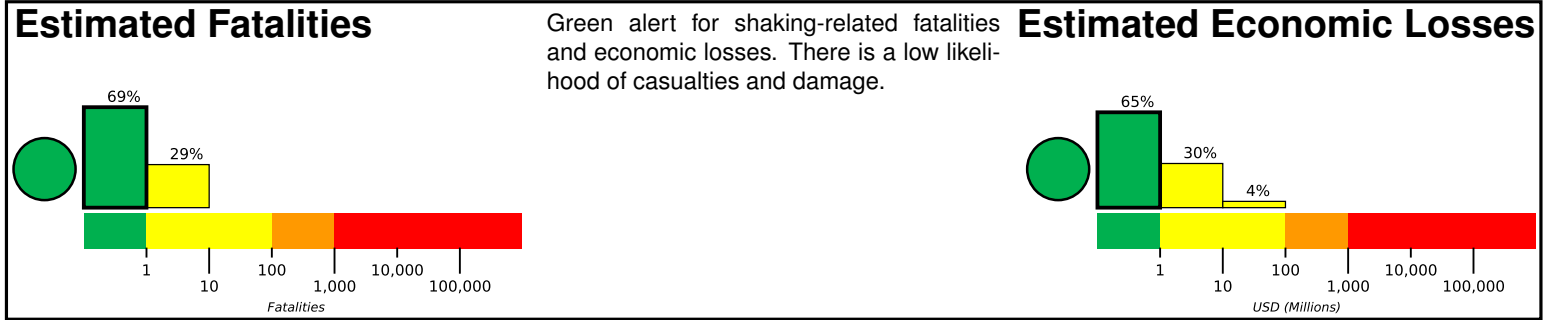


M 4.2, 15km NE of Enid, Oklahoma

Origin Time: 2018-03-05 03:40:59 UTC (Sun 21:40:59 local)
Location: 36.4833° N 97.7491° W Depth: 8.2 km

Created: 7 weeks, 3 days after earthquake

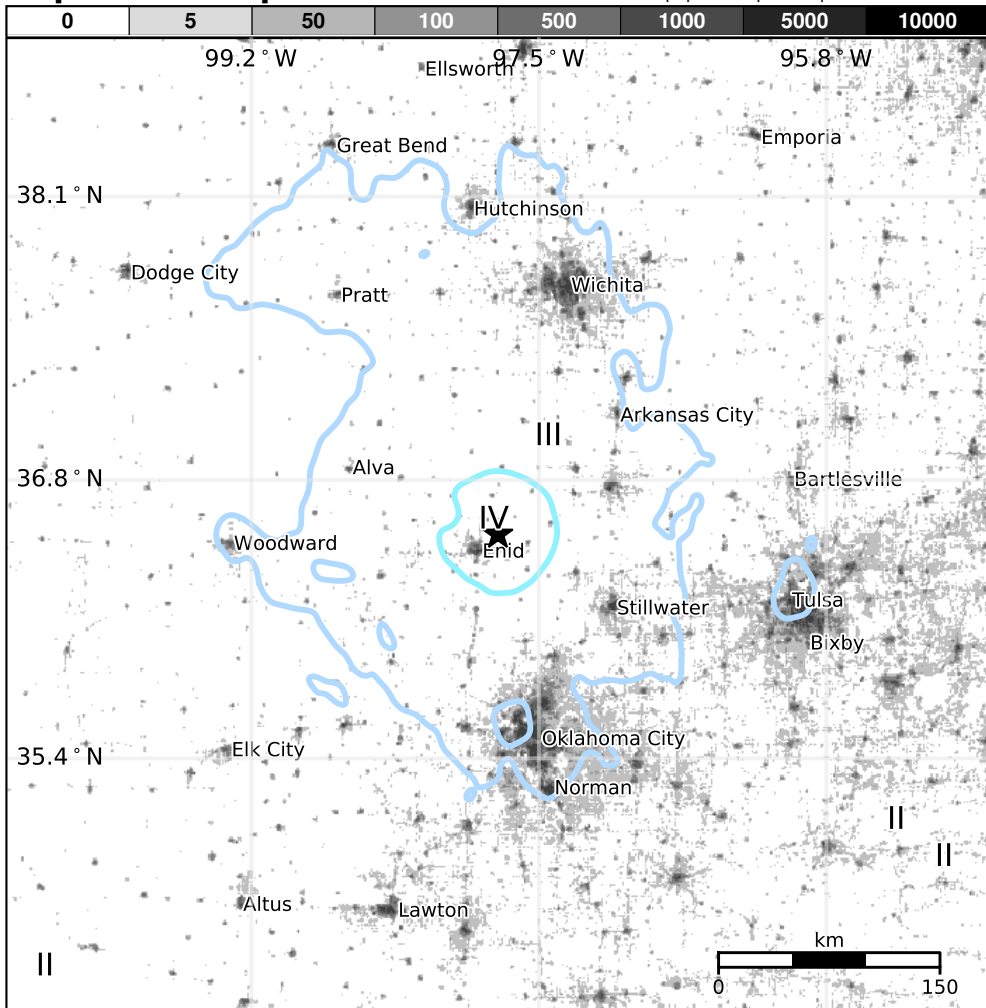


Estimated Population Exposed to Earthquake Shaking

ESTIMATED POPULATION EXPOSURE (k=x1000)		—*	5,129k	62k	0	0	0	0	0	0
ESTIMATED MODIFIED MERCALLI INTENSITY		I	II-III	IV	V	VI	VII	VIII	IX	X+
PERCEIVED SHAKING		Not felt	Weak	Light	Moderate	Strong	Very Strong	Severe	Violent	Extreme
POTENTIAL DAMAGE	Resistant Structures	None	None	None	V. Light	Light	Moderate	Mod./Heavy	Heavy	V. Heavy
	Vulnerable Structures	None	None	None	Light	Moderate	Mod./Heavy	Heavy	V. Heavy	V. Heavy

*Estimated exposure only includes population within the map area.

Population Exposure



Structures

Overall, the population in this region resides in structures that are resistant to earthquake shaking, though vulnerable structures exist. The predominant vulnerable building types are unreinforced brick masonry and reinforced masonry construction.

Historical Earthquakes

Date (UTC)	Dist. (km)	Mag.	Max MMI(#)	Shaking Deaths
1974-02-15	263	4.6	IV(8k)	—
1997-09-06	235	4.5	V(3k)	—

Selected City Exposure

from GeoNames.org

MMI	City	Population
IV	Enid	49k
IV	Waukomis	1k
III	Medford	1k
III	Hennessey	2k
III	Tonkawa	3k
III	Helena	1k
III	Wichita	382k
III	Tulsa	392k
III	Norman	111k
III	Oklahoma City	580k
II	Olathe	126k

PAGER content is automatically generated, and only considers losses due to structural damage. Limitations of input data, shaking estimates, and loss models may add uncertainty.

bold cities appear on map.

(k = x1000)