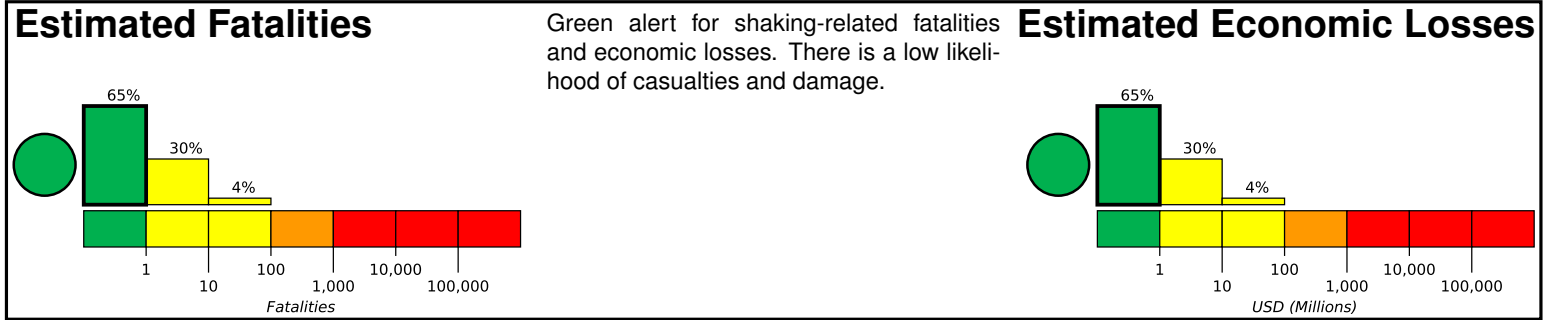


# M 4.7, 15km SE of Soda Springs, Idaho

Origin Time: 2017-09-11 13:26:35 UTC (Mon 07:26:35 local)  
Location: 42.5470° N 111.4397° W Depth: 8.4 km

Created: 2 weeks, 6 days after earthquake

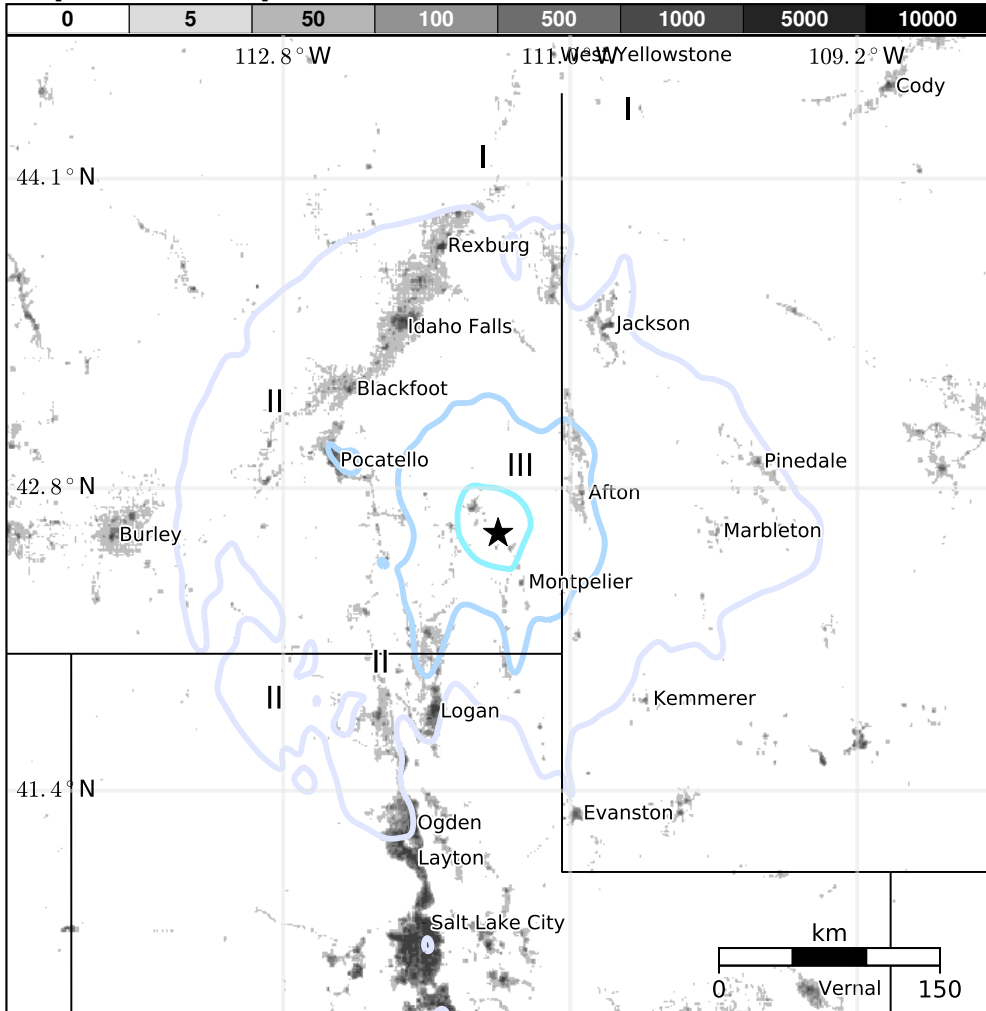


## Estimated Population Exposed to Earthquake Shaking

ESTIMATED POPULATION EXPOSURE (k=x1000)		1,694k*	1,217k	7k	0	0	0	0	0	0
ESTIMATED MODIFIED MERCALLI INTENSITY		I	II-III	IV	V	VI	VII	VIII	IX	X+
PERCEIVED SHAKING		Not felt	Weak	Light	Moderate	Strong	Very Strong	Severe	Violent	Extreme
POTENTIAL DAMAGE	Resistant Structures	None	None	None	V. Light	Light	Moderate	Mod./Heavy	Heavy	V. Heavy
	Vulnerable Structures	None	None	None	Light	Moderate	Mod./Heavy	Heavy	V. Heavy	V. Heavy

\*Estimated exposure only includes population within the map area.

## Population Exposure



## Structures

Overall, the population in this region resides in structures that are resistant to earthquake shaking, though vulnerable structures exist. The predominant vulnerable building types are unreinforced brick masonry and reinforced masonry construction.

## Historical Earthquakes

Date (UTC)	Dist. (km)	Mag.	Max MMI(#)	Shaking Deaths
1984-08-22	295	5.5	V(3k)	-
1994-02-03	46	5.8	VIII(1k)	-
1983-10-28	255	6.9	VII(2k)	2

Recent earthquakes in this area have caused secondary hazards such as landslides that might have contributed to losses.

## Selected City Exposure

from GeoNames.org

MMI	City	Population
IV	Soda Springs	3k
III	Montpelier	3k
III	Paris	1k
III	Preston	5k
III	Afton	2k
III	Lewiston	2k
II	Salt Lake City	186k
I	Sandy Hills	90k
I	Sandy City	87k
I	West Jordan	104k
I	West Valley City	129k

bold cities appear on map.

(k=x1000)

PAGER content is automatically generated, and only considers losses due to structural damage. Limitations of input data, shaking estimates, and loss models may add uncertainty.

<https://earthquake.usgs.gov/earthquakes/eventpage/us2000ak17#pager>

Event ID: us2000ak17