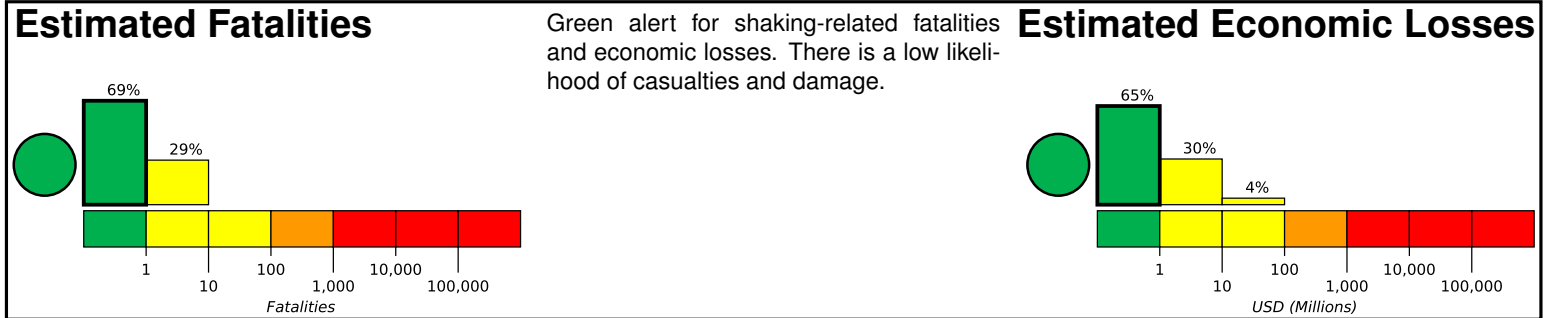


M 4.2, 6km ENE of Edmond, Oklahoma

Origin Time: 2017-08-03 02:56:37 UTC (Wed 21:56:37 local)
Location: 35.6720° N 97.4047° W Depth: 5.0 km

Created: 5 weeks, 1 day after earthquake

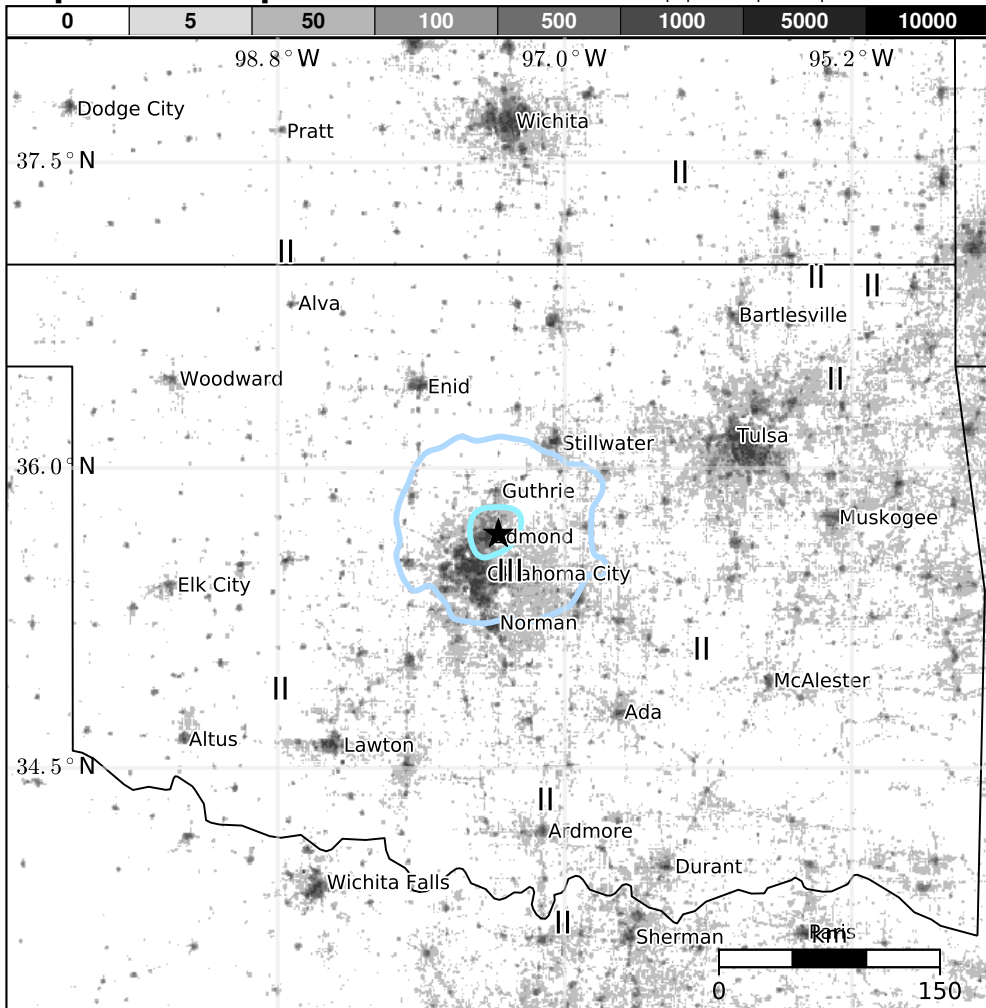


Estimated Population Exposed to Earthquake Shaking

ESTIMATED POPULATION EXPOSURE (k=x1000)		—*	5,586k	191k	0	0	0	0	0	0
ESTIMATED MODIFIED MERCALLI INTENSITY		I	II-III	IV	V	VI	VII	VIII	IX	X+
PERCEIVED SHAKING		Not felt	Weak	Light	Moderate	Strong	Very Strong	Severe	Violent	Extreme
POTENTIAL DAMAGE	Resistant Structures	None	None	None	V. Light	Light	Moderate	Mod./Heavy	Heavy	V. Heavy
	Vulnerable Structures	None	None	None	Light	Moderate	Mod./Heavy	Heavy	V. Heavy	V. Heavy

*Estimated exposure only includes population within the map area.

Population Exposure



Structures

Overall, the population in this region resides in structures that are resistant to earthquake shaking, though vulnerable structures exist. The predominant vulnerable building types are unreinforced brick masonry and reinforced masonry construction.

Historical Earthquakes

Date (UTC)	Dist. (km)	Mag.	Max MMI(#)	Shaking Deaths
1974-02-15	309	4.6	IV(8k)	—
1997-09-06	142	4.5	V(3k)	—

Selected City Exposure

from GeoNames.org

MMI	City	Population
IV	Edmond	81k
IV	The Village	9k
III	Nichols Hills	4k
III	Jones	3k
III	Luther	1k
III	Warr Acres	10k
III	Oklahoma City	580k
III	Norman	111k
II	Tulsa	392k
II	Wichita	382k
II	Wichita Falls	105k

PAGER content is automatically generated, and only considers losses due to structural damage. Limitations of input data, shaking estimates, and loss models may add uncertainty.

bold cities appear on map.

(k=x1000)