

M 6.1, northeastern Iran

Origin Time: 2017-04-05 06:09:12 UTC (Wed 10:39:12 local)
Location: 35.7755° N 60.4363° E Depth: 13.0 km

PAGER
Version 1

Created: 5 weeks, 1 day after earthquake

Estimated Fatalities

Yellow alert for shaking-related fatalities. Some casualties are possible and the impact should be relatively localized. Past events with this alert level have required a local or regional level response.

Green alert for economic losses. There is a low likelihood of damage.

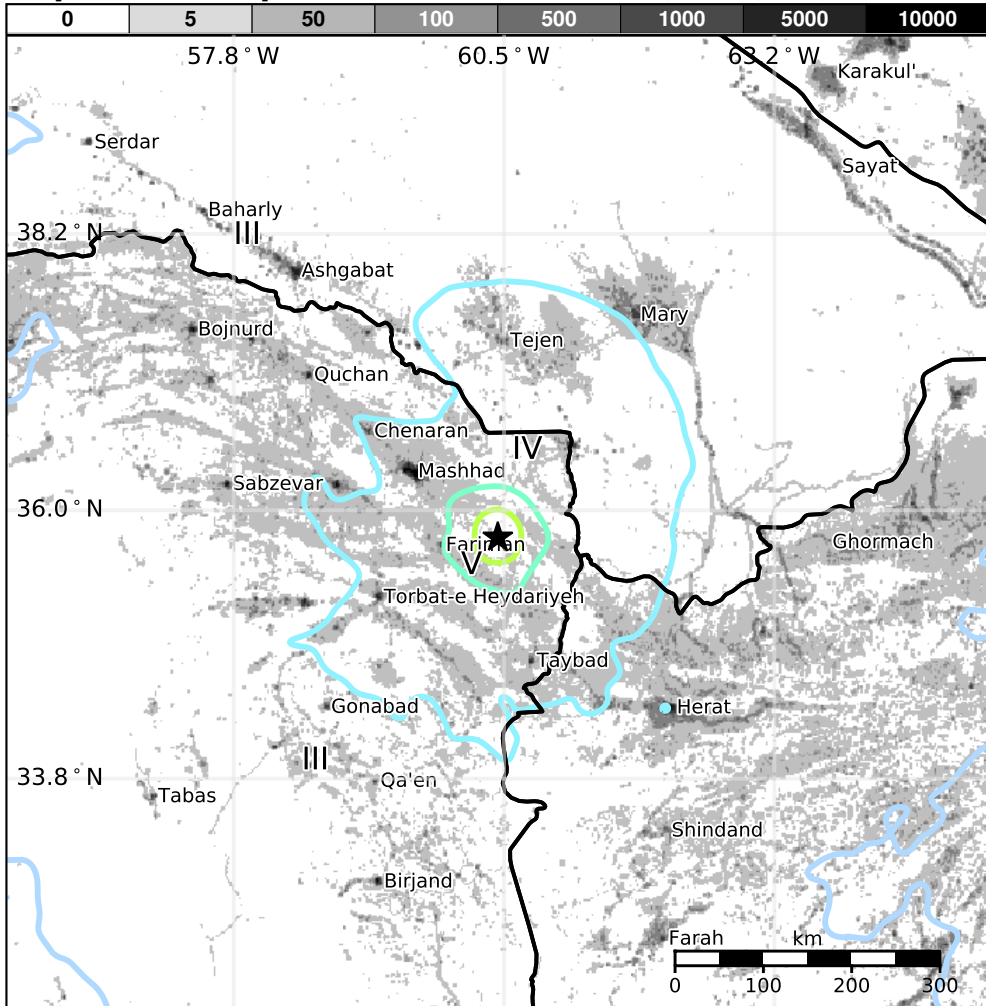
Estimated Economic Losses

Estimated Population Exposed to Earthquake Shaking

ESTIMATED POPULATION EXPOSURE (k=x1000)		—*	13,444k*	6,311k	124k	6k	1k	0	0	0
ESTIMATED MODIFIED MERCALLI INTENSITY		I	II-III	IV	V	VI	VII	VIII	IX	X+
PERCEIVED SHAKING		Not felt	Weak	Light	Moderate	Strong	Very Strong	Severe	Violent	Extreme
POTENTIAL DAMAGE	Resistant Structures	None	None	None	V. Light	Light	Moderate	Mod./Heavy	Heavy	V. Heavy
	Vulnerable Structures	None	None	None	Light	Moderate	Mod./Heavy	Heavy	V. Heavy	V. Heavy

*Estimated exposure only includes population within the map area.

Population Exposure



Structures

Overall, the population in this region resides in structures that are vulnerable to earthquake shaking, though resistant structures exist. The predominant vulnerable building types are adobe block and pre-cast tilt-up construction.

Historical Earthquakes

Date (UTC)	Dist. (km)	Mag.	Max MMI(#)	Shaking Deaths
1998-04-10	373	5.7	VI(4k)	12
1979-11-14	212	6.5	VI(4k)	280
1978-09-16	397	7.4	IX(29k)	18k

Recent earthquakes in this area have caused secondary hazards such as landslides that might have contributed to losses.

Selected City Exposure

from GeoNames.org

MMI	City	Population
V	Fariman	<1k
IV	Torbat-e Jam	59k
IV	Mashhad	2,307k
IV	Sarakhs	46k
IV	Shahrak-e Bakharz	<1k
IV	Dowlatabad	<1k
IV	Herat	273k
III	Turkmenabat	235k
III	Birjand	197k
III	Ashgabat	728k
III	Bukhara	248k

PAGER content is automatically generated, and only considers losses due to structural damage. Limitations of input data, shaking estimates, and loss models may add uncertainty.

bold cities appear on map.

(k = x1000)