

M 7.6, OFFSHORE LOS LAGOS, CHILE

Origin Time: Sun 2016-12-25 14:22:27 UTC (14:22:27 local)

Location: 43.41°S 73.94°W Depth: 38 km

FOR TSUNAMI INFORMATION, SEE: tsunami.gov

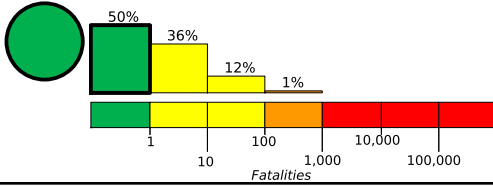
Created: 12 weeks, 4 days after earthquake

PAGER
Version 14

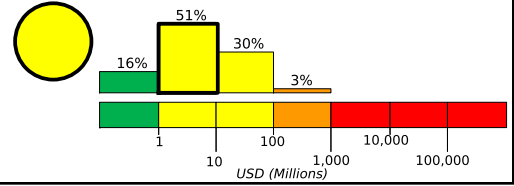
Estimated Fatalities

Yellow alert level for economic losses. Some damage is possible and the impact should be relatively localized. Estimated economic losses are less than 1% of GDP of Chile. Past events with this alert level have required a local or regional level response.

Green alert level for shaking-related fatalities. There is a low likelihood of casualties.



Estimated Economic Losses

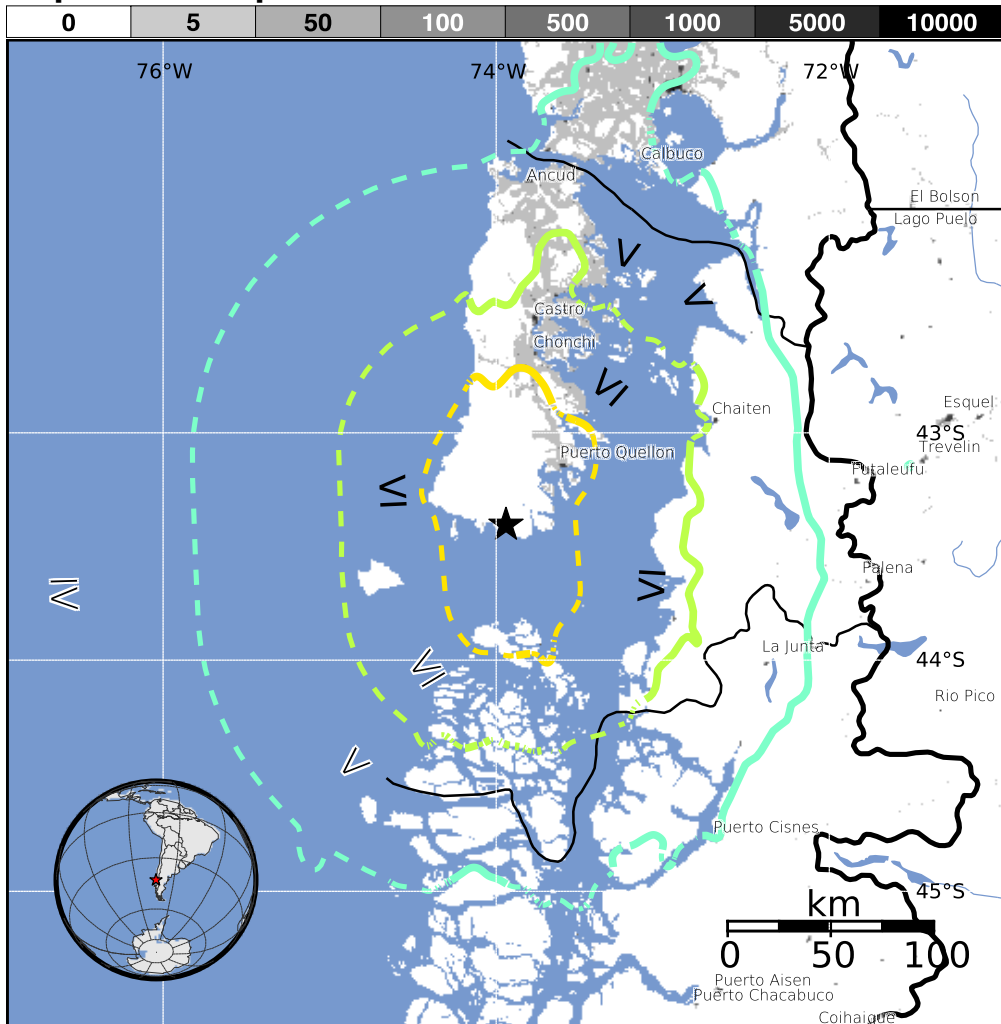


Estimated Population Exposed to Earthquake Shaking

ESTIMATED POPULATION EXPOSURE (k = x1000)	--*	--*	328k*	203k	88k	45k	1k	0	0	
ESTIMATED MODIFIED MERCALLI INTENSITY	I	II-III	IV	V	VI	VII	VIII	IX	X+	
PERCEIVED SHAKING	Not felt	Weak	Light	Moderate	Strong	Very Strong	Severe	Violent	Extreme	
POTENTIAL DAMAGE	Resistant Structures	none	none	none	V. Light	Light	Moderate	Moderate/Heavy	Heavy	V. Heavy
	Vulnerable Structures	none	none	none	Light	Moderate	Moderate/Heavy	Heavy	V. Heavy	V. Heavy

*Estimated exposure only includes population within the map area.

Population Exposure



Structures:

Overall, the population in this region resides in structures that are resistant to earthquake shaking, though some vulnerable structures exist. The predominant vulnerable building types are low-rise reinforced/confinement masonry and concrete/cinder block masonry construction.

Historical Earthquakes (with MMI levels):

Date (UTC)	Dist. (km)	Mag.	Max MMI(#)	Shaking Deaths
2007-04-02	230	6.1	VII(7k)	0
2007-04-21	225	6.2	VII(13k)	0
1981-07-28	201	5.6	VII(30k)	0

Recent earthquakes in this area have caused secondary hazards such as tsunamis and landslides that might have contributed to losses.

Selected City Exposure

from GeoNames.org

MMI City	Population
VII Puerto Quellon	22k
VI Castro	30k
VI Chonchi	13k
VI Chaiten	4k
V La Junta	1k
V Ancud	28k
V Puerto Aisen	17k
V Puerto Varas	25k
IV Puerto Montt	160k
IV Coihaique	46k
IV Esquel	28k

bold cities appear on map

(k = x1000)

PAGER content is automatically generated, and only considers losses due to structural damage. Limitations of input data, shaking estimates, and loss models may add uncertainty.

<http://earthquake.usgs.gov/earthquakes/eventpage/us10007mn3>

Event ID: us10007mn3