

**M 6.2, CENTRAL ITALY**

Origin Time: Wed 2016-08-24 01:36:32 UTC (03:36:32 local)

Location: 42.72°N 13.19°E Depth: 4 km

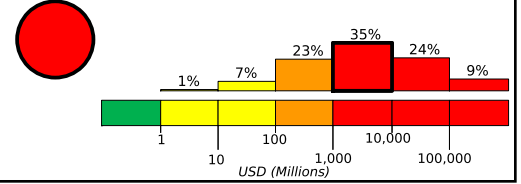
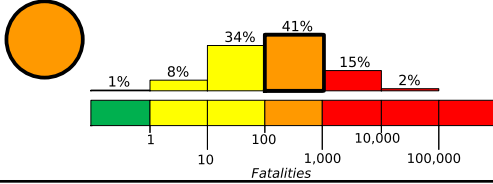
Created: 5 weeks, 6 days after earthquake

**Estimated Fatalities**

Red alert level for economic losses. Extensive damage is probable and the disaster is likely widespread. Estimated economic losses are less than 1% of GDP of Italy. Past events with this alert level have required a national or international level response.

**Estimated Economic Losses**

Orange alert level for shaking-related fatalities. Significant casualties are likely.

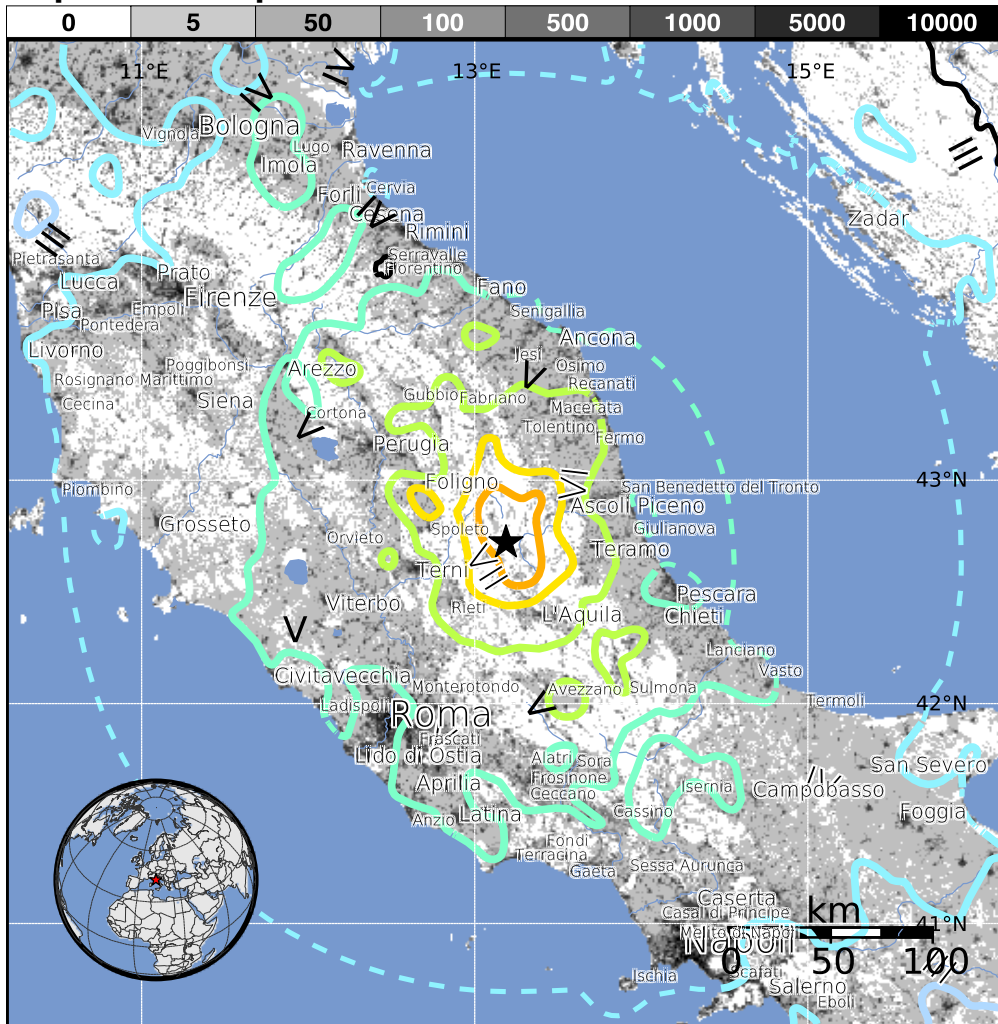


**Estimated Population Exposed to Earthquake Shaking**

ESTIMATED POPULATION EXPOSURE (k = x1000)		--*	3,522k*	14,037k*	5,753k	1,171k	145k	19k	3k	0
ESTIMATED MODIFIED MERCALLI INTENSITY		I	II-III	IV	V	VI	VII	VIII	IX	X+
PERCEIVED SHAKING		Not felt	Weak	Light	Moderate	Strong	Very Strong	Severe	Violent	Extreme
POTENTIAL DAMAGE	Resistant Structures	none	none	none	V. Light	Light	Moderate	Moderate/Heavy	Heavy	V. Heavy
	Vulnerable Structures	none	none	none	Light	Moderate	Moderate/Heavy	Heavy	V. Heavy	V. Heavy

\*Estimated exposure only includes population within the map area.

**Population Exposure**



**Structures:**

Overall, the population in this region resides in structures that are a mix of vulnerable and earthquake resistant construction. The predominant vulnerable building types are unreinforced brick with mud and mid-rise nonductile concrete frame with infill construction.

**Historical Earthquakes (with MMI levels):**

Date (UTC)	Dist. (km)	Mag.	Max MMI(#)	Shaking Deaths
1997-09-26	51	6.0	VIII(10k)	11
1997-09-26	46	5.7	VIII(2k)	14
1980-11-23	278	6.9	IX(37k)	2k

Recent earthquakes in this area have caused secondary hazards such as landslides that might have contributed to losses.

**Selected City Exposure**

from GeoNames.org

MMI	City	Population
IX	Amatrice	3k
IX	Accumoli	< 1k
VIII	Arquata del Tronto	1k
VIII	Norcia	5k
VIII	Montefortino	1k
V	Perugia	149k
IV	Roma	2,563k
IV	Firenze	372k
IV	Napoli	989k
III	Bologna	371k

bold cities appear on map

(k = x1000)

PAGER content is automatically generated, and only considers losses due to structural damage. Limitations of input data, shaking estimates, and loss models may add uncertainty.

<http://earthquake.usgs.gov/earthquakes/eventpage/us10006g7d>

Event ID: us10006g7d