

M 6.0, 6.8 km (4.2 mi) NW of American Canyon, CA

Origin Time: Sun 2014-08-24 10:20:44 UTC (03:20:44 local)

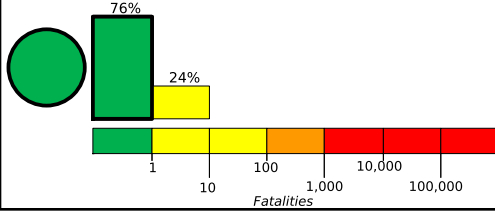
Location: 38.22°N 122.31°W Depth: 11 km

Created: 4 days, 4 hours after earthquake

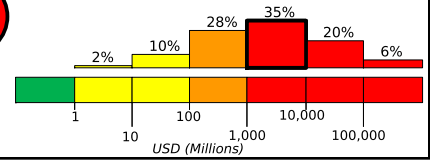
Estimated Fatalities

Red alert level for economic losses. Extensive damage is probable and the disaster is likely widespread. Estimated economic losses are less than 1% of GDP of the United States. Past events with this alert level have required a national or international level response.

Green alert level for shaking-related fatalities. There is a low likelihood of casualties.



Estimated Economic Losses

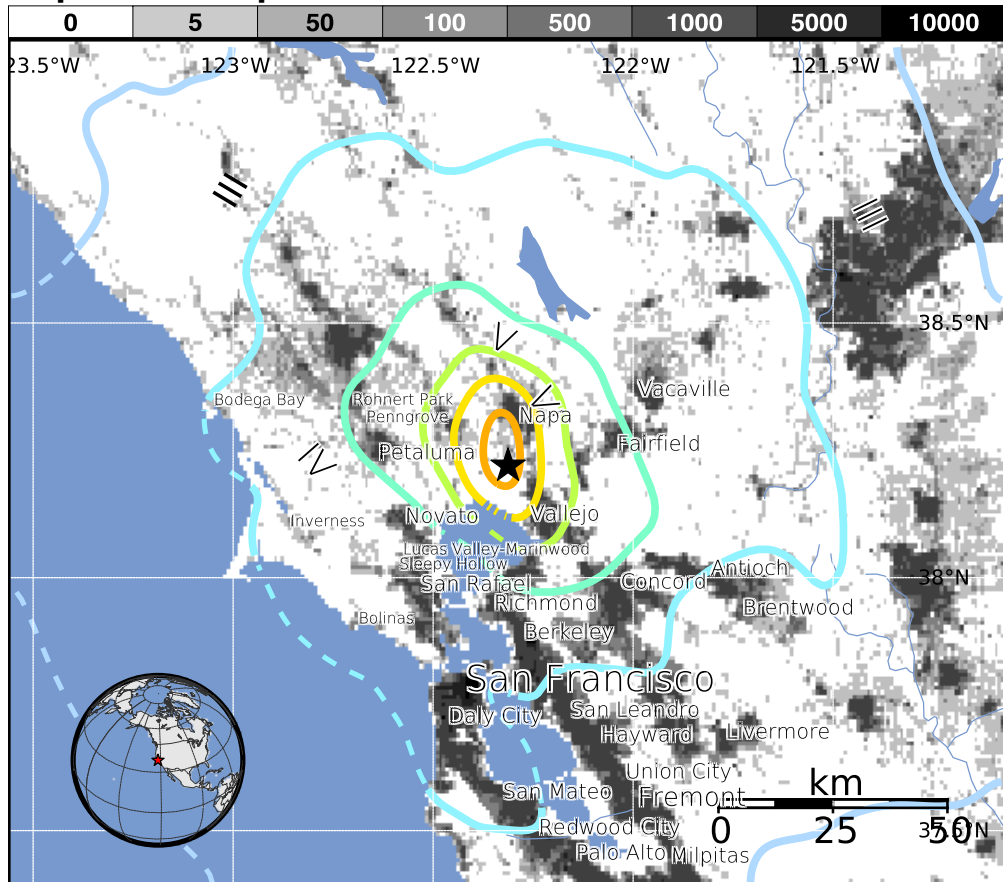


Estimated Population Exposed to Earthquake Shaking

ESTIMATED POPULATION EXPOSURE (k = x1000)	- - *	4,881k*	3,281k	370k	145k	52k	82k	0	0
ESTIMATED MODIFIED MERCALLI INTENSITY	I	II-III	IV	V	VI	VII	VIII	IX	X+
PERCEIVED SHAKING	Not felt	Weak	Light	Moderate	Strong	Very Strong	Severe	Violent	Extreme
POTENTIAL DAMAGE	Resistant Structures	none	none	none	V. Light	Light	Moderate	Moderate/Heavy	Heavy
	Vulnerable Structures	none	none	none	Light	Moderate	Moderate/Heavy	Heavy	V. Heavy

*Estimated exposure only includes population within the map area.

Population Exposure



Structures:

Overall, the population in this region resides in structures that are highly resistant to earthquake shaking, though some vulnerable structures exist.

Historical Earthquakes (with MMI levels):

Date (UTC)	Dist. (km)	Mag.	Max MMI(#)	Shaking Deaths
1983-05-02	284	5.7	VIII(1k)	0
1980-01-24	76	5.8	VII(31k)	1
1989-10-18	132	6.9	IX(3k)	62

Recent earthquakes in this area have caused secondary hazards such as landslides and liquefaction that might have contributed to losses.

Selected City Exposure

from GeoNames.org

MMI City	Population
VIII Napa	77k
VII Yountville	3k
VII American Canyon	19k
VI El Verano	4k
VI Sonoma	11k
VI Temelec	1k
IV Oakland	391k
IV San Francisco	805k
III Sacramento	466k
III Fremont	214k
III Stockton	292k

bold cities appear on map

(k = x1000)

PAGER content is automatically generated, and only considers losses due to structural damage. Limitations of input data, shaking estimates, and loss models may add uncertainty.

<http://earthquake.usgs.gov/pager>

Event ID: nc72282711