

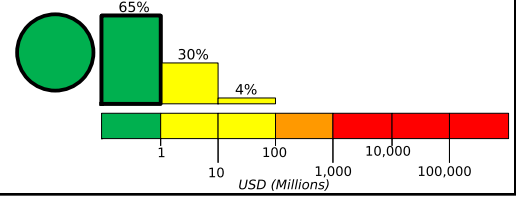
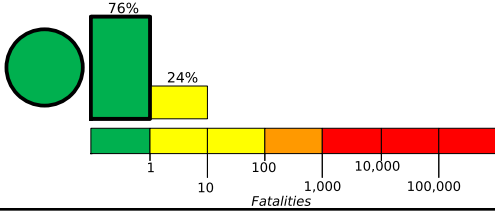
M 7.1, 29 miles SE of Pedro Bay
Origin Time: Sun 2016-01-24 10:30:29 UTC (10:30:29 local)
Location: 59.60°N 153.34°W Depth: 123 km

Created: 2 days, 7 hours after earthquake

Estimated Fatalities

Green alert for shaking-related fatalities and economic losses. There is a low likelihood of casualties and damage.

Estimated Economic Losses

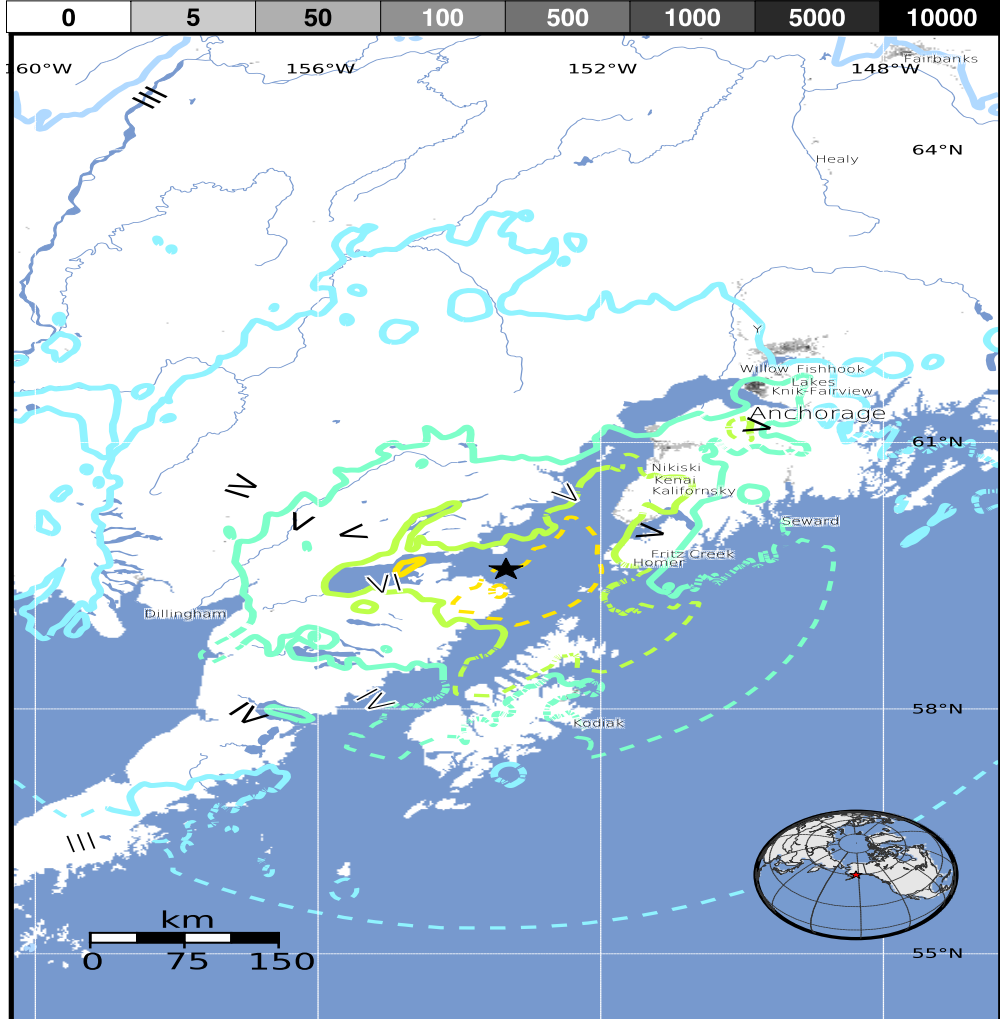


Estimated Population Exposed to Earthquake Shaking

ESTIMATED POPULATION EXPOSURE (k = x1000)	- .*	112k*	68k	283k	132k	0	0	0	0	
ESTIMATED MODIFIED MERCALLI INTENSITY	I	II-III	IV	V	VI	VII	VIII	IX	X+	
PERCEIVED SHAKING	Not felt	Weak	Light	Moderate	Strong	Very Strong	Severe	Violent	Extreme	
POTENTIAL DAMAGE	Resistant Structures	none	none	none	V. Light	Light	Moderate	Moderate/Heavy	Heavy	V. Heavy
	Vulnerable Structures	none	none	none	Light	Moderate	Moderate/Heavy	Heavy	V. Heavy	V. Heavy

*Estimated exposure only includes population within the map area.

Population Exposure



Structures:

Overall, the population in this region resides in structures that are resistant to earthquake shaking, though some vulnerable structures exist.

Historical Earthquakes (with MMI levels):

Date (UTC)	Dist. (km)	Mag.	Max MMI(#)	Shaking Deaths
1984-08-14	334	5.8	VI(5k)	0
1999-12-06	260	7.0	VII(331)	0
2001-01-10	297	6.9	VIII(99)	0

Selected City Exposure

from GeoNames.org

MMI	City	Population
VI	Soldotna	4k
VI	Kalifornsky	8k
VI	Cohoe	1k
VI	Sterling	6k
VI	Kenai	7k
VI	Ridgeway	2k
V	Anchorage	292k
V	Knik-Fairview	15k
III	Fairbanks	32k
III	College	13k
III	Badger	19k

bold cities appear on map

(k = x1000)

PAGER content is automatically generated, and only considers losses due to structural damage. Limitations of input data, shaking estimates, and loss models may add uncertainty.

<http://earthquake.usgs.gov/earthquakes/eventpage/ak12496371>

Event ID: ak12496371