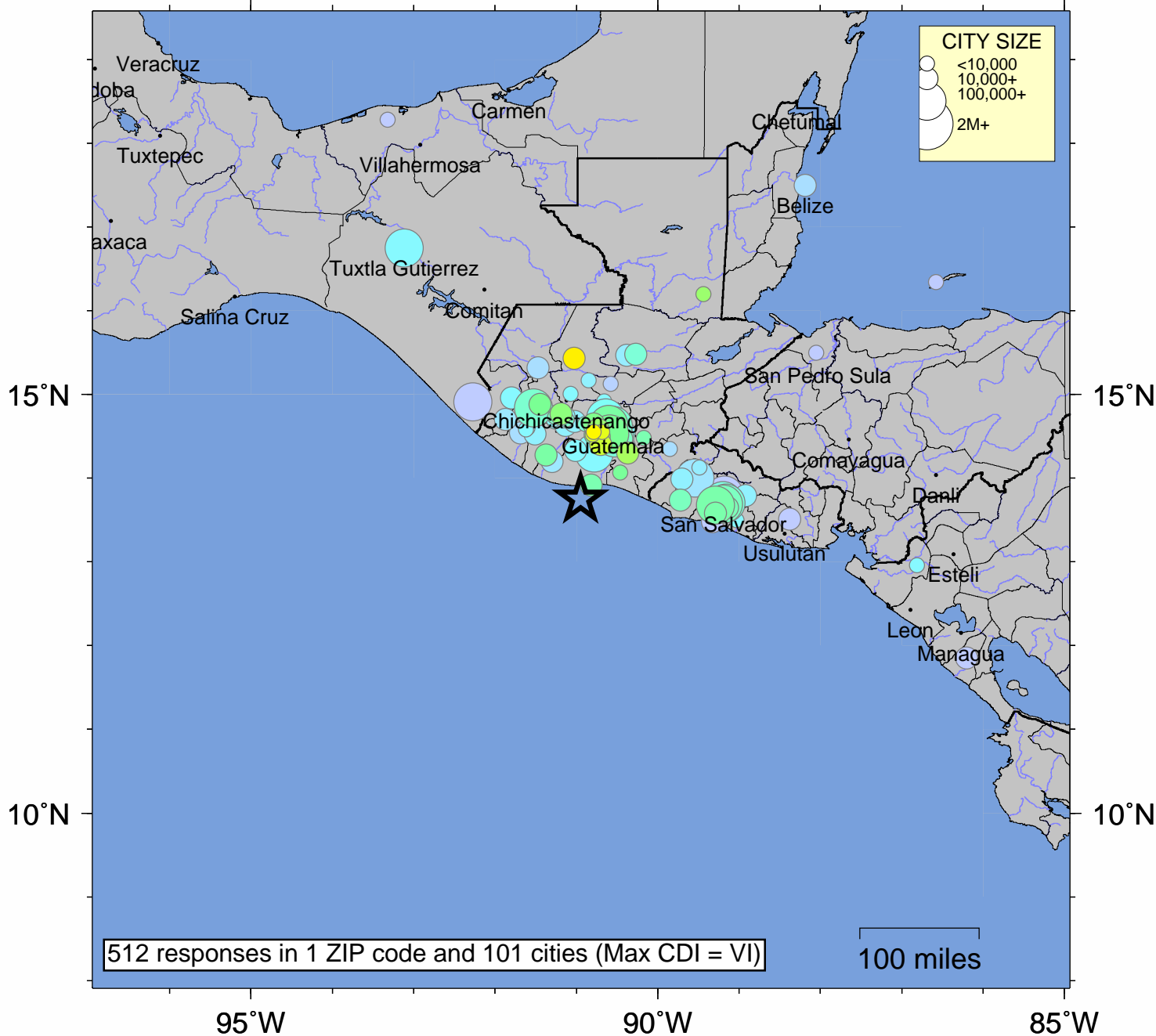


USGS Community Internet Intensity Map OFFSHORE GUATEMALA

Jun 22 2017 12:31:04 PM UTC 13.7527N 90.9488W M6.8 Depth: 46 km ID:us20009p1a



SHAKING	<i>Not felt</i>	<i>Weak</i>	<i>Light</i>	<i>Moderate</i>	<i>Strong</i>	Very strong	Severe	Violent	Extreme
DAMAGE	none	none	none	Very light	<i>Light</i>	<i>Moderate</i>	<i>Moderate/Heavy</i>	<i>Heavy</i>	<i>Very Heavy</i>
INTENSITY	I	II-III	IV	V	VI	VII	VIII	IX	X+