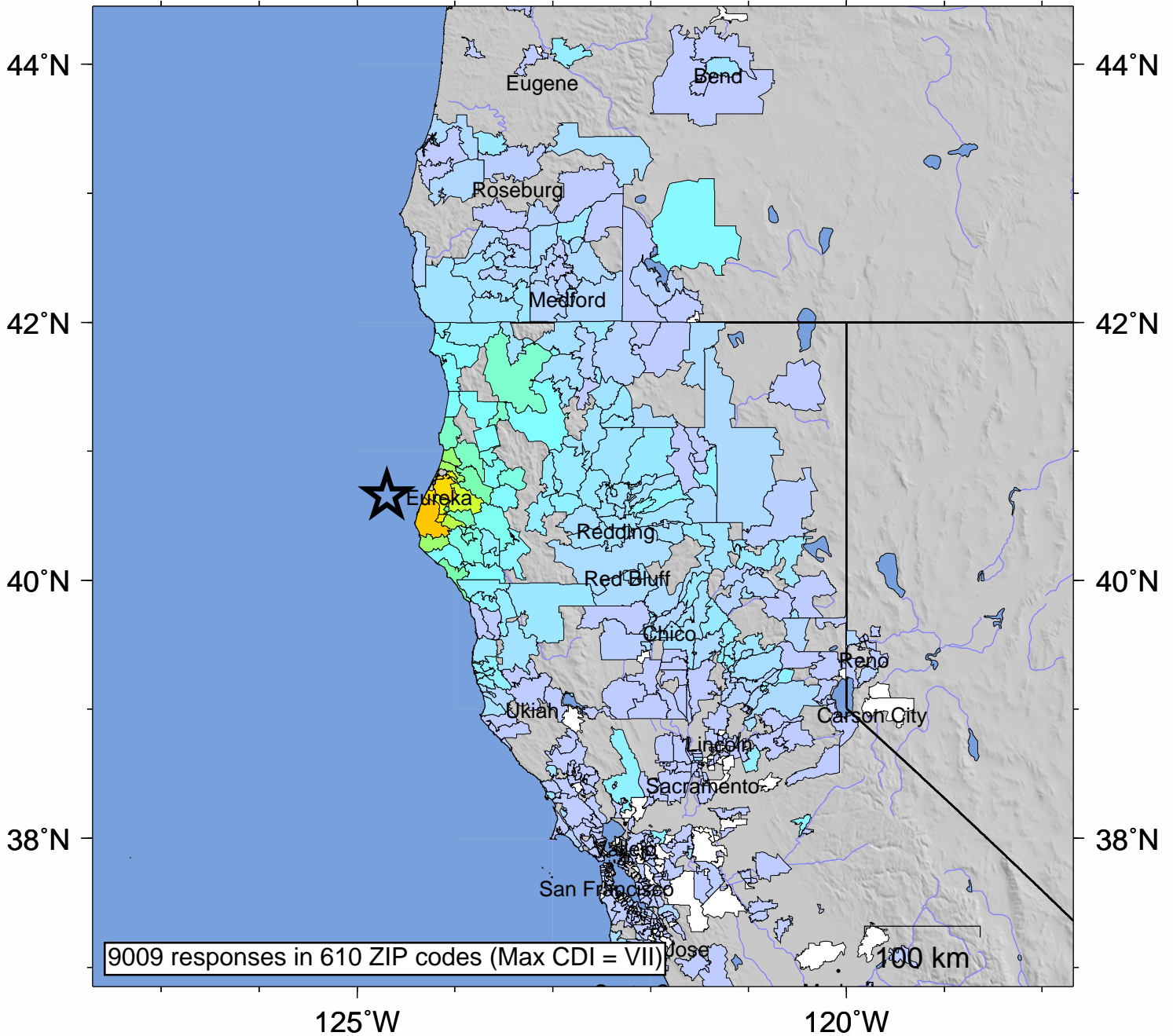


USGS Community Internet Intensity Map OFFSHORE NORTHERN CALIFORNIA

Jan 9 2010 16:27:39 local 40.652N 124.6925W M6.5 Depth: 29 km ID:nc71338066



INTENSITY	I	II-III	IV	V	VI	VII	VIII	IX	X+
SHAKING	Not felt	Weak	Light	Moderate	Strong	Very strong	Severe	Violent	Extreme
DAMAGE	none	none	none	Very light	Light	Moderate	Moderate/Heavy	Heavy	V. Heavy

Processed: Wed Jan 28 02:34:33 2015