

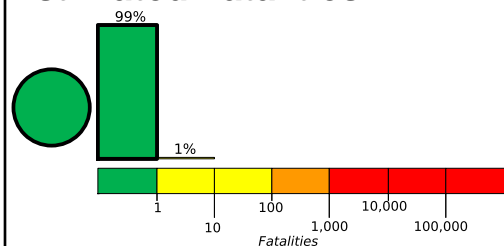
M 4.2, 6.9 km (4.3 mi) SE of Spring City, UT

Origin Time: Sun 2014-06-29 00:56:22 UTC (18:56:22 local)

Location: 39.44°N 111.44°W Depth: 8 km

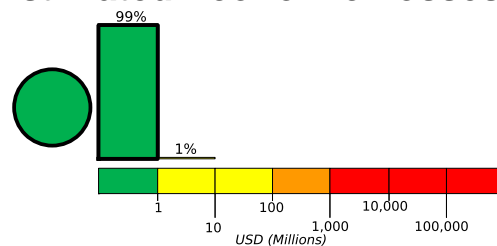
Created: 3 days, 22 hours after earthquake

Estimated Fatalities



Green alert for shaking-related fatalities and economic losses. There is a low likelihood of casualties and damage.

Estimated Economic Losses

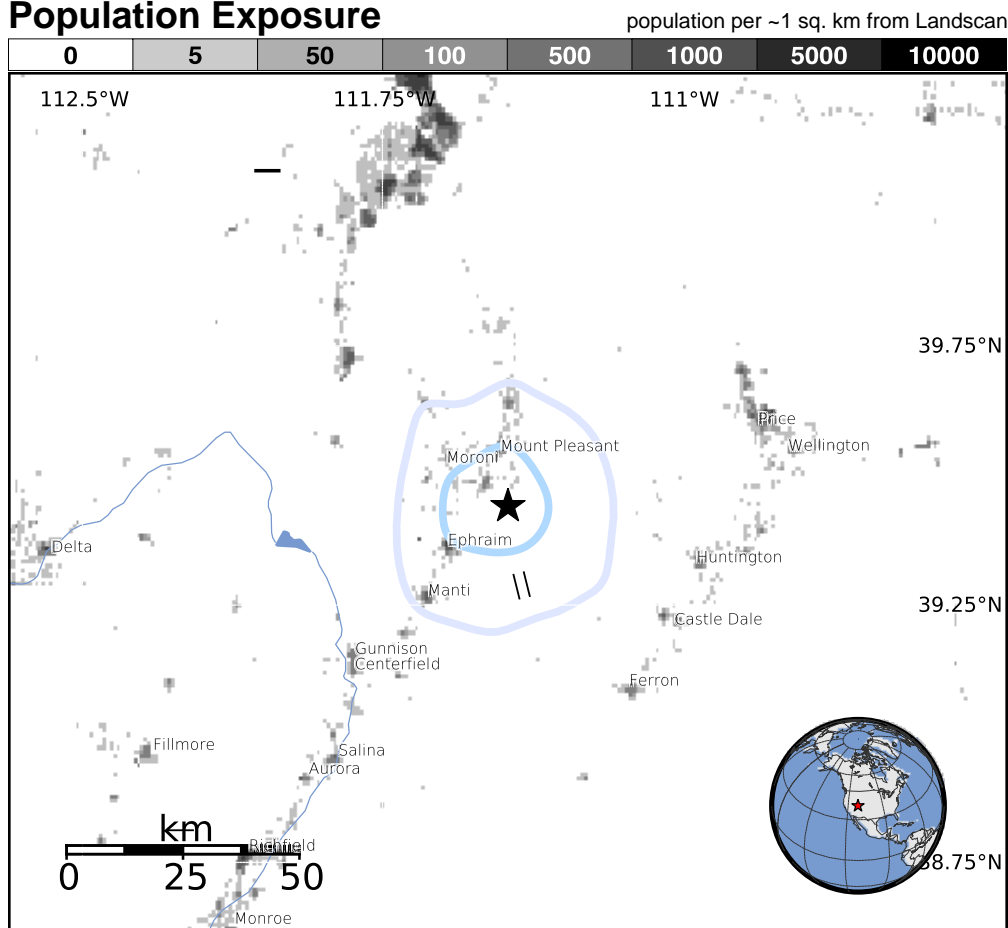


Estimated Population Exposed to Earthquake Shaking

ESTIMATED POPULATION EXPOSURE (k = x1000)	300k	21k	0	0	0	0	0	0	0
ESTIMATED MODIFIED MERCALLI INTENSITY	I	II-III	IV	V	VI	VII	VIII	IX	X+
PERCEIVED SHAKING	Not felt	Weak	Light	Moderate	Strong	Very Strong	Severe	Violent	Extreme
POTENTIAL DAMAGE	Resistant Structures	none	none	none	V. Light	Light	Moderate	Moderate/Heavy	Heavy
	Vulnerable Structures	none	none	none	Light	Moderate	Moderate/Heavy	Heavy	V. Heavy

*Estimated exposure only includes population within the map area.

Population Exposure



Structures:

Overall, the population in this region resides in structures that are resistant to earthquake shaking, though some vulnerable structures exist.

Historical Earthquakes (with MMI levels):

Date (UTC)	Dist. (km)	Mag.	Max MMI(#)	Shaking Deaths
1992-09-02	322	5.6	VII(9k)	0
1975-03-28	298	6.2	VIII(9)	0
1994-02-03	372	5.8	VIII(967)	0

Selected City Exposure

from GeoNames.org

MMI City	Population
III Mount Pleasant	3k
III Ephraim	6k
III Moroni	1k
II Fairview	1k
II Manti	3k
II Fountain Green	1k
I Provo	112k
I Spanish Fork	35k
I Springville	29k
I Payson	18k
I Santaquin	9k

bold cities appear on map

(k = x1000)