

M 6.3, VANUATU

Origin Time: Tue 2014-07-08 12:56:26 UTC (23:56:26 local)

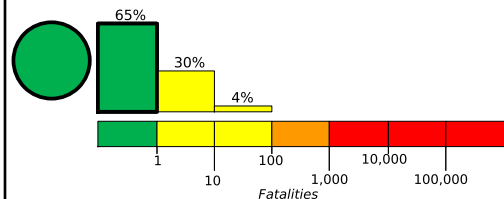
Location: 17.62°S 168.36°E Depth: 114 km

PAGER
Version 1

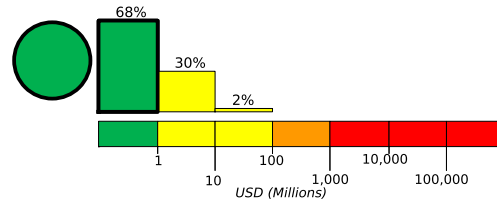
Created: 23 minutes, 14 seconds after earthquake

Estimated Fatalities

Green alert for shaking-related fatalities and economic losses. There is a low likelihood of casualties and damage.



Estimated Economic Losses

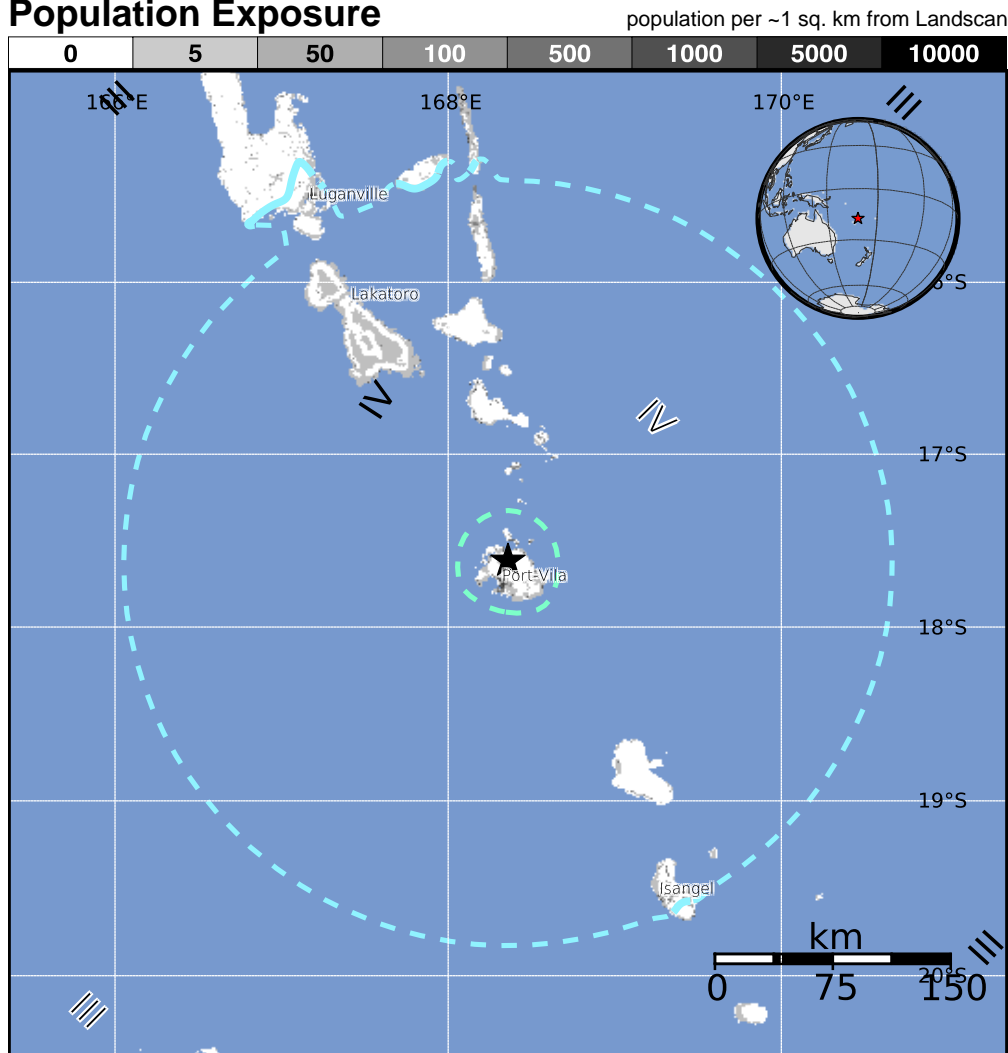


Estimated Population Exposed to Earthquake Shaking

ESTIMATED POPULATION EXPOSURE (k = x1000)		- - *	46k*	149k	60k	0	0	0	0	0
ESTIMATED MODIFIED MERCALLI INTENSITY		I	II-III	IV	V	VI	VII	VIII	IX	X+
PERCEIVED SHAKING		Not felt	Weak	Light	Moderate	Strong	Very Strong	Severe	Violent	Extreme
POTENTIAL DAMAGE	Resistant Structures	none	none	none	V. Light	Light	Moderate	Moderate/Heavy	Heavy	V. Heavy
	Vulnerable Structures	none	none	none	Light	Moderate	Moderate/Heavy	Heavy	V. Heavy	V. Heavy

*Estimated exposure only includes population within the map area.

Population Exposure



Structures:

Overall, the population in this region resides in structures that are vulnerable to earthquake shaking, though some resistant structures exist.

Historical Earthquakes (with MMI levels):

Date (UTC)	Dist. (km)	Mag.	Max MMI(#)	Shaking Deaths
2001-10-26	99	6.1	V(53k)	0
1987-01-03	291	6.6	IX(2k)	0
1999-08-22	171	6.5	IX(2k)	0

Recent earthquakes in this area have caused secondary hazards such as landslides that might have contributed to losses.

Selected City Exposure

from GeoNames.org

MMI City	Population
V Port-Vila	36k
IV Norsup	3k
IV Isangel	1k
IV Lakatoro	< 1k
IV Luganville	13k
III Port-Olry	2k

bold cities appear on map

(k = x1000)

PAGER content is automatically generated, and only considers losses due to structural damage. Limitations of input data, shaking estimates, and loss models may add uncertainty.

<http://earthquake.usgs.gov/pager>

Event ID: usc000rrmg