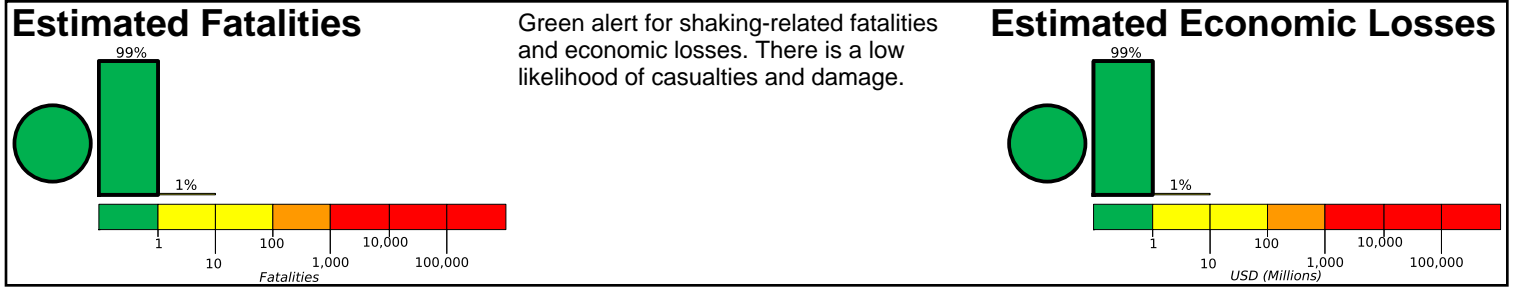


M 6.3, MINDANAO, PHILIPPINES

Origin Time: Mon 2014-07-14 08:00:00 UTC (16:00:00 local)

Location: 5.68°N 126.57°E Depth: 44 km

Created: 2 hours, 19 minutes after earthquake

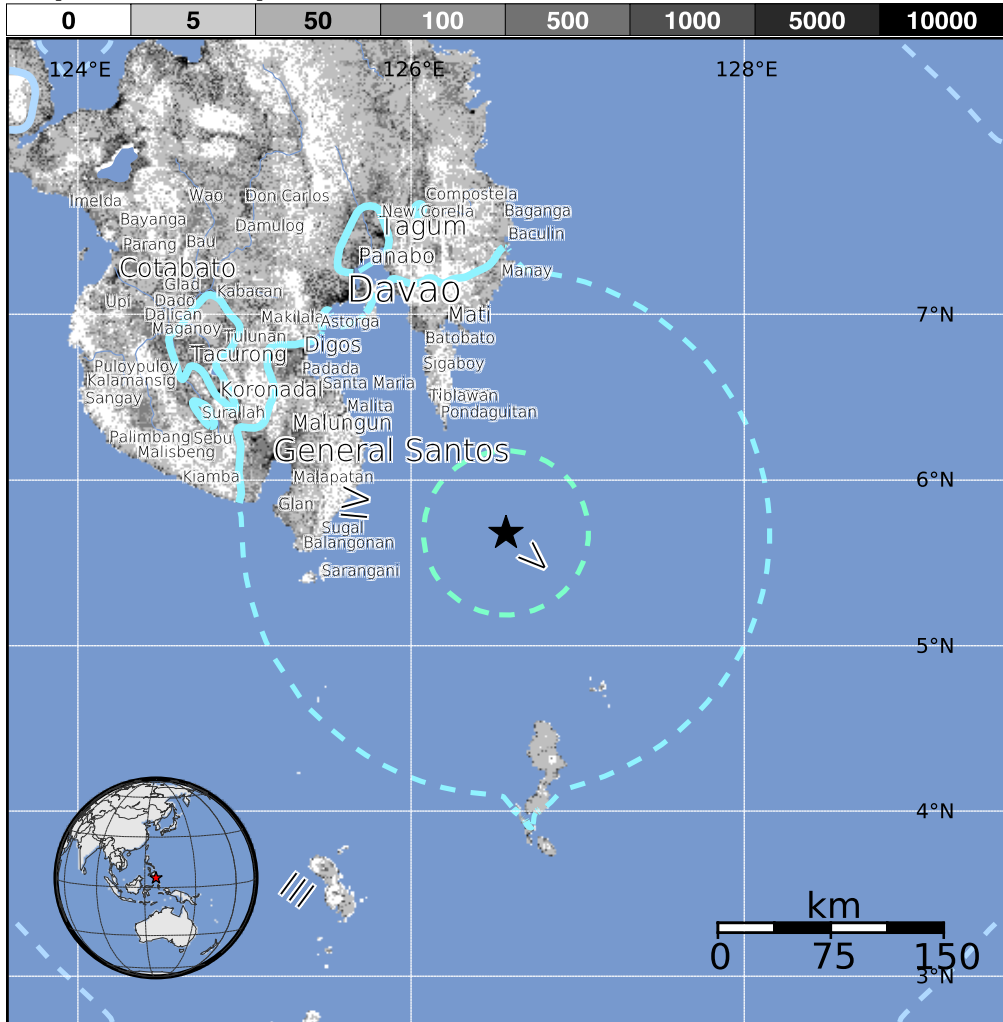


Estimated Population Exposed to Earthquake Shaking

ESTIMATED POPULATION EXPOSURE (k = x1000)		--*	12,023k*	5,702k	0	0	0	0	0	0
ESTIMATED MODIFIED MERCALLI INTENSITY		I	II-III	IV	V	VI	VII	VIII	IX	X+
PERCEIVED SHAKING		Not felt	Weak	Light	Moderate	Strong	Very Strong	Severe	Violent	Extreme
POTENTIAL DAMAGE	Resistant Structures	none	none	none	V. Light	Light	Moderate	Moderate/Heavy	Heavy	V. Heavy
	Vulnerable Structures	none	none	none	Light	Moderate	Moderate/Heavy	Heavy	V. Heavy	V. Heavy

*Estimated exposure only includes population within the map area.

Population Exposure



Structures:

Overall, the population in this region resides in structures that are a mix of vulnerable and earthquake resistant construction.

Historical Earthquakes (with MMI levels):

Date (UTC)	Dist. (km)	Mag.	Max MMI(#)	Shaking Deaths
2007-08-20	108	6.4	IV(12,961k)	0
2005-02-05	354	7.1	III(15,484k)	2
2002-03-05	259	7.5	VIII(12k)	15

Recent earthquakes in this area have caused secondary hazards such as landslides that might have contributed to losses.

Selected City Exposure

from GeoNames.org

MMI	City	Population
IV	Surup	2k
IV	Pondaguitan	2k
IV	Sarangani	8k
IV	Tibanbang	8k
IV	Nangan	3k
IV	Malita	41k
IV	Koronadal	126k
III	Davao	1,213k
III	Budta	1,274k
III	Cotabato	179k
III	Cagayan de Oro	445k

bold cities appear on map

(k = x1000)

PAGER content is automatically generated, and only considers losses due to structural damage. Limitations of input data, shaking estimates, and loss models may add uncertainty.

<http://earthquake.usgs.gov/pager>

Event ID: usb000rsr5