

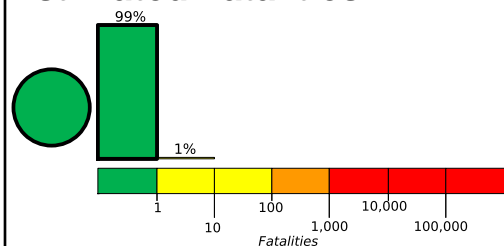
M 5.6, NEW BRITAIN REGION, PAPUA NEW GUINEA

Origin Time: Sun 2014-07-13 20:00:40 UTC (06:00:40 local)

Location: 4.14°S 151.19°E Depth: 35 km

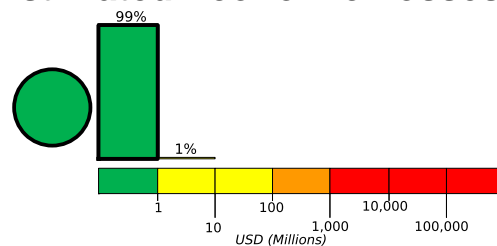
Created: 17 minutes, 31 seconds after earthquake

Estimated Fatalities



Green alert for shaking-related fatalities and economic losses. There is a low likelihood of casualties and damage.

Estimated Economic Losses

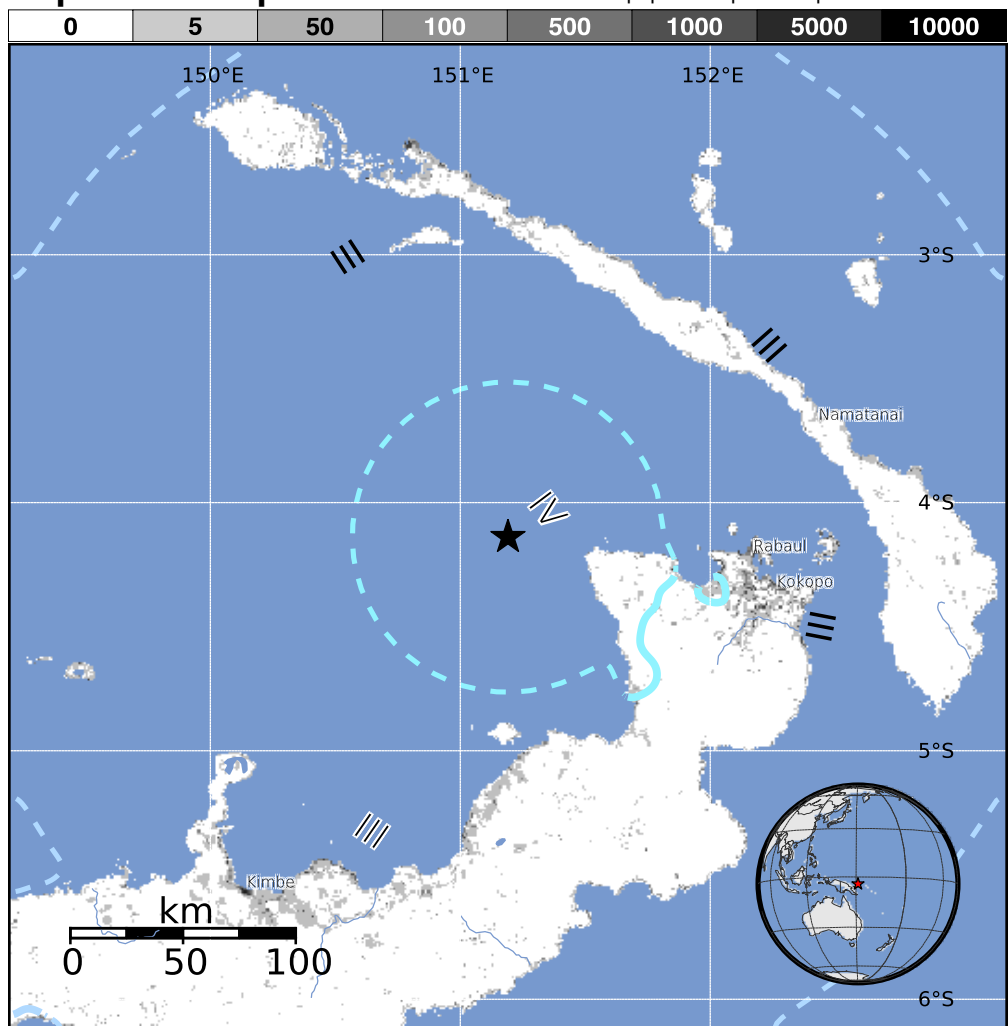


Estimated Population Exposed to Earthquake Shaking

ESTIMATED POPULATION EXPOSURE (k = x1000)		- - *	501k	37k	0	0	0	0	0	0
ESTIMATED MODIFIED MERCALLI INTENSITY		I	II-III	IV	V	VI	VII	VIII	IX	X+
PERCEIVED SHAKING		Not felt	Weak	Light	Moderate	Strong	Very Strong	Severe	Violent	Extreme
POTENTIAL DAMAGE	Resistant Structures	none	none	none	V. Light	Light	Moderate	Moderate/Heavy	Heavy	V. Heavy
	Vulnerable Structures	none	none	none	Light	Moderate	Moderate/Heavy	Heavy	V. Heavy	V. Heavy

*Estimated exposure only includes population within the map area.

Population Exposure



Structures:

Overall, the population in this region resides in structures that are vulnerable to earthquake shaking, though some resistant structures exist.

Historical Earthquakes (with MMI levels):

Date (UTC)	Dist. (km)	Mag.	Max MMI(#)	Shaking Deaths
2005-11-05	354	6.4	V(3k)	0
1985-05-10	163	7.2	VII(28k)	1
1983-12-21	165	6.2	VII(5k)	10

Recent earthquakes in this area have caused secondary hazards such as landslides that might have contributed to losses.

Selected City Exposure

from GeoNames.org

MMI City	Population
III Kokopo	26k
III Rabaul	8k
III Kavieng	14k
III Namatanai	1k
III Kimbe	19k

bold cities appear on map

(k = x1000)

PAGER content is automatically generated, and only considers losses due to structural damage. Limitations of input data, shaking estimates, and loss models may add uncertainty.

<http://earthquake.usgs.gov/pager>

Event ID: usb000rsns