

M 4.0, 54.6 miles N of Kotzebue

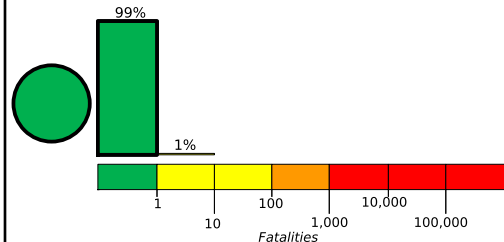
Origin Time: Fri 2014-08-22 05:13:39 UTC (21:13:39 local)

Location: 67.68°N 162.76°W Depth: 15 km

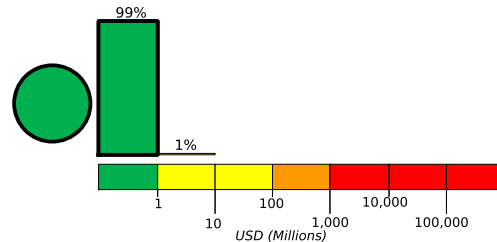
Created: 17 minutes, 4 seconds after earthquake

Estimated Fatalities

Green alert for shaking-related fatalities and economic losses. There is a low likelihood of casualties and damage.



Estimated Economic Losses

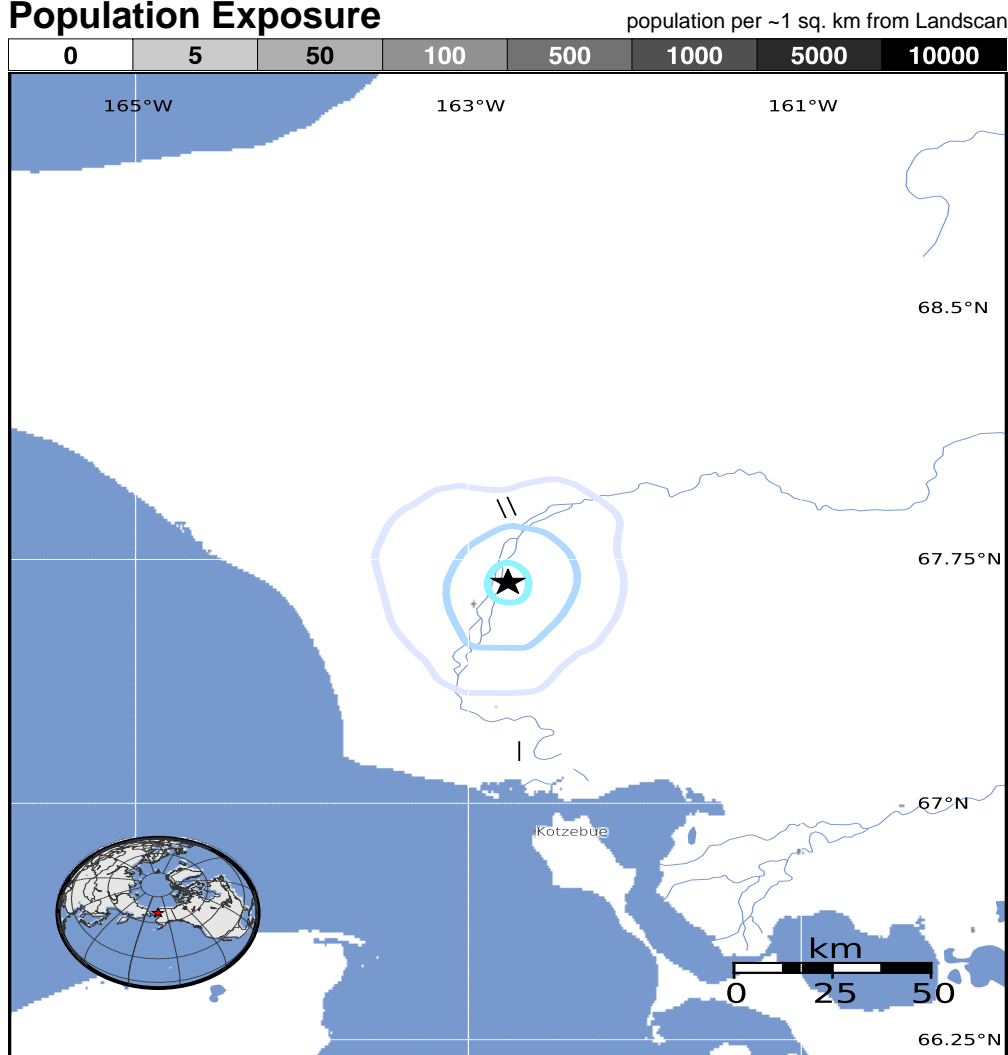


Estimated Population Exposed to Earthquake Shaking

ESTIMATED POPULATION EXPOSURE (k = x1000)		6k	0	0	0	0	0	0	0	0
ESTIMATED MODIFIED MERCALLI INTENSITY		I	II-III	IV	V	VI	VII	VIII	IX	X+
PERCEIVED SHAKING		Not felt	Weak	Light	Moderate	Strong	Very Strong	Severe	Violent	Extreme
POTENTIAL DAMAGE	Resistant Structures	none	none	none	V. Light	Light	Moderate	Moderate/Heavy	Heavy	V. Heavy
	Vulnerable Structures	none	none	none	Light	Moderate	Moderate/Heavy	Heavy	V. Heavy	V. Heavy

*Estimated exposure only includes population within the map area.

Population Exposure



Structures:

Overall, the population in this region resides in structures that are resistant to earthquake shaking, though some vulnerable structures exist.

Historical Earthquakes (with MMI levels):

There were no earthquakes with significant population exposure to shaking within a 400 km radius of this event.

Selected City Exposure

from GeoNames.org

MMI City	Population
I Kotzebue	3k

bold cities appear on map

(k = x1000)

PAGER content is automatically generated, and only considers losses due to structural damage. Limitations of input data, shaking estimates, and loss models may add uncertainty.

<http://earthquake.usgs.gov/pager>

Event ID: ak11363766