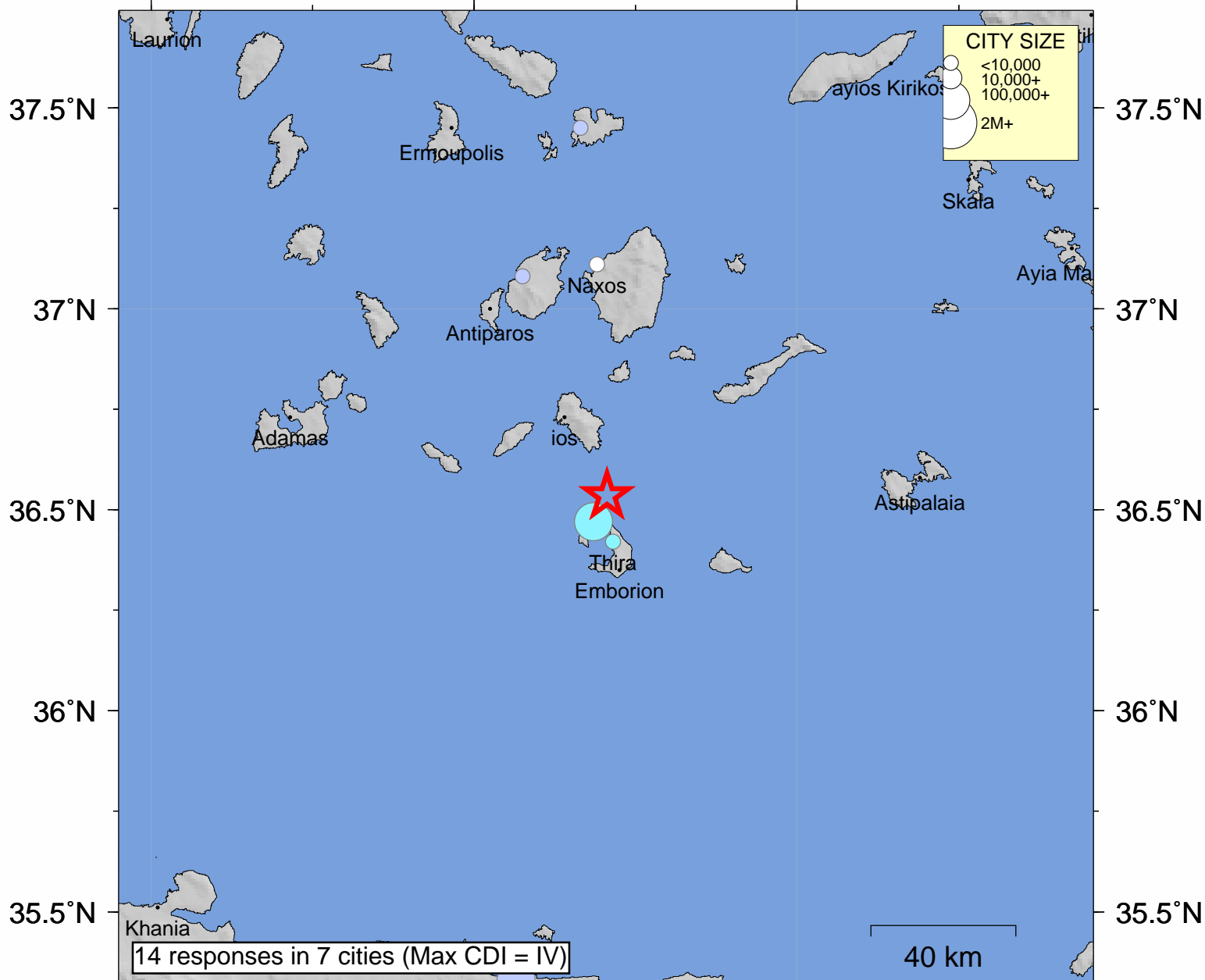


USGS Community Internet Intensity Map DODECANESE ISLANDS, GREECE

Jun 27 2009 01:14:57 local 36.5348N 25.4118E M4.6 Depth: 40 km ID:us2009iib2



INTENSITY	I	II-III	IV	V	VI	VII	VIII	IX	X+
SHAKING	Not felt	Weak	Light	Moderate	Strong	Very strong	Severe	Violent	Extreme
DAMAGE	none	none	none	Very light	Light	Moderate	Moderate/Heavy	Heavy	V. Heavy

Processed: Thu Jul 2 10:52:25 2009