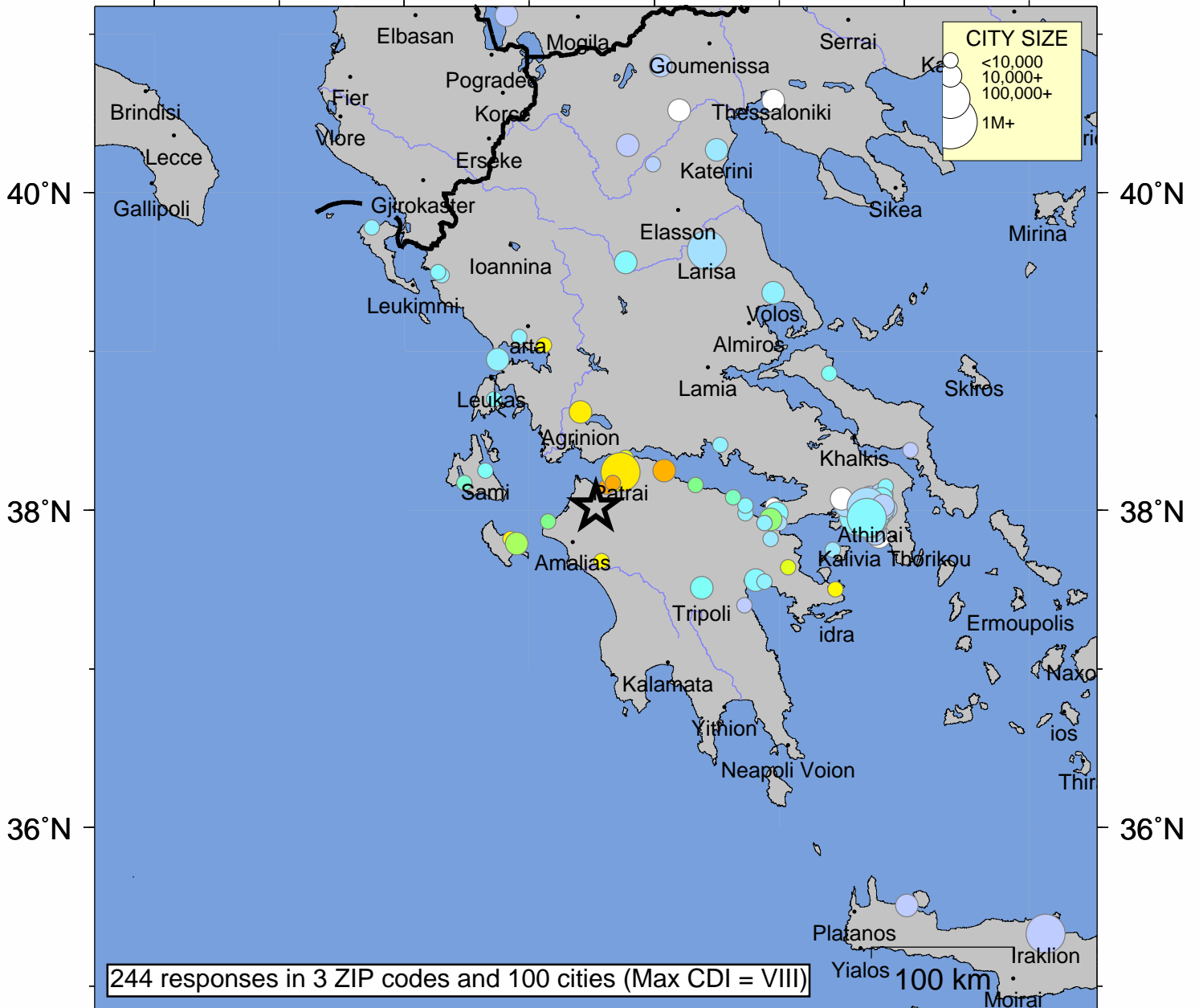


USGS Community Internet Intensity Map GREECE

Jun 8 2008 15:25:29 UTC+3 38.0206N 21.5346E M6.3 Depth: 16 km ID:us2008taaw



	18°E	20°E	22°E	24°E					
INTENSITY	I	II-III	IV	V	VI	VII	VIII	IX	X+
SHAKING	Not felt	Weak	Light	Moderate	Strong	Very strong	Severe	Violent	Extreme
DAMAGE	none	none	none	Very light	Light	Moderate	Moderate/Heavy	Heavy	V. Heavy

Processed: Mon Apr 6 09:14:30 2009